

Julien's  
AUCTIONS



THE COLLECTION OF THE KING OF POP

# Michael Jackson

*Furniture & Decorative Arts*

APRIL 22 & 23, 2009











THE COLLECTION OF THE KING OF POP

# Michael Jackson

*A Once-In-A-Lifetime Auction*

*Featuring the Personal Property of Michael Jackson*

## Julien's AUCTIONS

### PUBLIC EXHIBITION

#### BEVERLY HILLS, CALIFORNIA

9900 Wilshire Boulevard, Beverly Hills, California 90210

Adjacent to the Beverly Hilton

*April 14 – April 21, 2009*

10:00 a.m. – 6:00 p.m. daily

\$20.00 per person for the Exhibition and Auction

Exhibition Designers: WRJ Design Associates, LLC

### LIVE AND ONLINE AUCTION

#### BEVERLY HILLS, CALIFORNIA

9900 Wilshire Boulevard, Beverly Hills, California 90210

Adjacent to the Beverly Hilton

*April 22, 2009*

Session I: Garden Statuary & Outdoor Furniture

Session II: Furniture & Decorative Arts

*April 23, 2009*

Session III: Furniture & Decorative Arts

Session IV: Antiques, Paintings & Fine Decorative Arts

*April 24, 2009*

Session V: Amusements, Arcade Games & Entertainment

Session VI: Amusements, Arcade Games & Entertainment

*April 25, 2009*

Session VII: Memorabilia from the Life & Career of Michael Jackson

Session VIII: Memorabilia from the Life & Career of Michael Jackson

A portion of the proceeds  
of this auction will benefit



MUSICARES®

Live Broadcast By



Auction Network is the live-bid-to-picture interactive auction entertainment network that offers audiences compelling interactive programming which merges the sport and spirit of live auction with the ability to watch, bid and win live, real-time, in H-D from anywhere in the world. Auction Network allows viewers to participate either live or through absentee bidding online at [www.auctionnetwork.com](http://www.auctionnetwork.com)

*the*  
**BEVERLY HILTON®**

Located adjacent to the site of the Michael Jackson Exhibition and Auction, the Beverly Hilton (awarded the Mobil Four Star for the second consecutive year) is offering special room rates, packages, and VIP private bidding suites. For more information or reservations please visit [www.beverlyhilton.com](http://www.beverlyhilton.com).

NOTE: While some information regarding the condition of property has been included in the lot descriptions in this catalogue, this should in no way be construed as a full disclosure of condition. We urge you to request a full condition report for any lot of interest. To request a detailed condition report of any lot or lots in this catalogue, please email your request (including your contact information) to [info@juliensauctions.com](mailto:info@juliensauctions.com).





Front row left to right:  
 Fran Campione, Darren Julien,  
 Martin Nolan, Melanie Newman  
 Back row left to right: Alex Saenz,  
 Lindsey Karnopp, Megan Mahn,  
 Michael Doyle, Hillary Ripps,  
 Laura Woolley, Shaan Kokin  
 Not pictured: Rebecca Markman,  
 Rush Jenkins, Klaus Baer



**DARREN JULIEN**  
 President / CEO, [darren@juliensauctions.com](mailto:darren@juliensauctions.com)

**MARTIN J. NOLAN**  
 Executive Director, [martin@juliensauctions.com](mailto:martin@juliensauctions.com)

**MEGAN MAHN**  
 Director of Special Projects, [megan@juliensauctions.com](mailto:megan@juliensauctions.com)

**SHAAN KOKIN**  
 Creative Director, [shaan@juliensauctions.com](mailto:shaan@juliensauctions.com)

**HILLARY RIPPS**  
 Office Manager, [hillary@juliensauctions.com](mailto:hillary@juliensauctions.com)

**MELANIE NEWMAN**  
 Accounting, [melanie@juliensauctions.com](mailto:melanie@juliensauctions.com)

**MICHAEL DOYLE**  
 Administrator, [michael@juliensauctions.com](mailto:michael@juliensauctions.com)

**FRAN CAMPIONE**  
 Executive Assistant, [fran@juliensauctions.com](mailto:fran@juliensauctions.com)

**ALEX SAENZ**  
 Warehouse Manager, [alex@juliensauctions.com](mailto:alex@juliensauctions.com)

**LINDSEY KARNOPP**  
 Photographer

**LAURA WOOLLEY / The Collectors Lab**  
 Consultant, [lwoolley@thecollectorslab.com](mailto:lwoolley@thecollectorslab.com)

**REBECCA MARKMAN / Antiques and Fine Art Appraisal Services**  
 Consultant, [antiquesappraiser@cox.net](mailto:antiquesappraiser@cox.net)

**RUSH JENKINS and KLAUS BAER / WRJ Design Associates, LLC**  
 Exhibition Designers, [wrjassociates@gmail.com](mailto:wrjassociates@gmail.com)

**DANIEL KRUSE and KATHLEEN GUZMAN**  
 Auctioneers

**Julien's**  
 AUCTIONS

P.O. Box 691789  
 West Hollywood, California 90069  
 Phone: 310-836-1818  
 Fax: 310-827-2125  
 Email: [info@juliensauctions.com](mailto:info@juliensauctions.com)  
 Web: [www.juliensauctions.com](http://www.juliensauctions.com)  
[www.juliensauctions.co.uk](http://www.juliensauctions.co.uk)







THE COLLECTION OF THE KING OF POP

# Michael Jackson

*Furniture & Decorative Art*

LOTS 150 – LOTS 326



150



150



151, partial



152

**150  
SILVER CUPID COMPOTE  
AND PAIR OF THREE-LIGHT  
CANDELABRA**

Marked with a crowned C, a mark ORFE 30, and symbol marks.

Tallest, height 8 ¾ inches

\$200 – 300

**151  
COLONIAL STYLE TILT-TOP  
OCCASIONAL TABLE**

On turned tripod base. Evidence of repair and restoration. Together with another colonial style occasional table.

Largest, 25 ½ by 26 by 24 ½ inches

\$400 – 600

**152  
VICTORIAN MAHOGANY  
ROCOCO STYLE ARMCHAIR**

With shell carved crest and frame and upholstered seat and back.

38 by 25 by 19 inches

\$200 – 300





153

**153**  
**PAIR OF QUEEN ANNE**  
**STYLE ARMCHAIRS**

Featuring vase splat backs and cabriole  
legs with scroll decoration and pad feet.

49 by 22 by 18 inches

\$300 – 500



154



155



156

#### 154

#### PAIR OF EDWARDIAN SIDE CHAIRS

With elaborate fruit and foliate carved openwork backspat, tapered reeded legs, and upholstered seats.

33 by 16 by 16 inches

\$300 – 500

#### 155

#### GEMSTONE TABLE GLOBE

In a brass holder.

Height, 18 inches; diameter, 10 inches

\$100 – 200

#### 156

#### JACOBEOAN STYLE END TABLE

With pullout drawer, decorative carving, and turned legs.

29 by 26 by 20 inches

\$100 – 200





157

**157  
ENGLISH OAK VALET STAND**

With two pullout drawers, pants rack, and spiral-twist posts.

47 ½ by 20 ½ by 18 ½ inches

\$300 – 500

**158  
BRONZE STATUE OF NAPOLEON  
CROSSING THE ALPS**

Modern polychrome patinaed version of Jacques-Louis David's famous painting, featuring Napoleon on a rearing horse with billowing red cape and upraised arm, with cannon at his feet. Unsigned, mounted on green rectangular base.

69 by 47 ½ by 20 ½ inches

\$300 – 500

**159  
CRYSTAL BALL ON STAND**

Crystal ball on gilt-metal tripod support.

Height, 8 ½ inches; diameter, 6 inches

\$100 – 200



158



159



160

**160**  
**SQUARE SLAT BACK**  
**OAK ARMCHAIR**

Late 19th/early 20th century desk chair  
with legs attached by a stretcher.

41 ½ by 20 by 15 ½ inches

\$200 – 300



161

**161**  
**TRIPOD OCCASIONAL TABLE**

With acanthus carved standard and snake  
feet.

29 by 25 inches

\$200 – 300



162

**162**  
**JACOBAN STYLE**  
**OCCASIONAL TABLE**

With a six-sided top and turned legs  
connected by stretchers.

26 by 26 inches

\$100 – 200





163

**163  
ADJUSTABLE VICTORIAN  
BOOK STAND**

In oak and iron, on casters.

43 by 19 1/2 inches

\$100 – 200



164

**164  
PAIR OF GEORGIAN  
STYLE ANDIRONS**

Brass-ball finials with baluster-shaped standards.

23 by 12 by 6 1/2 inches

\$200 – 300



165

**165  
DROP-LEAF WOODEN TABLE**

With spiral turned legs. *Evidence of restoration.*

27 1/2 by 42 by 37 inches extended

\$400 – 600



166



167

**166  
PAIR OF QUEEN ANNE STYLE  
WINGBACK ARMCHAIRS**

In burgundy button-tufted leather. Marked  
"Made in Italy."

45 by 33 ½ by 25 ½ inches

\$300 – 500

**167  
JACOBAN STYLE LOWBOY**

With three pullout drawers with drop  
pulls, carved decoration, and cabriole  
legs.

28 ½ by 34 by 20 inches

\$300 – 500

**168  
19TH CENTURY ORIENTALIST  
STYLE SCULPTURAL CLOCK**

Featuring a hussar riding a stallion,  
mounted to a clock base. In polychrome  
and parcel-gilded metal. Abraded patina  
on horse. *Clock not operational at time of  
cataloging.*

27 ½ by 22 by 11 inches

\$300 – 500





168





169



170

**169**  
**MARK HOPKINS**  
**(AMERICAN, 20TH CENTURY)**

"Tall Tales," signed, dated '91, numbered 71/250. Bronze statue of a supine boy reading a book.

9 ¾ by 22 by 9 inches

\$800 – 1,200

**170**  
**MARBLE FIGURAL GROUP**

Of three dogs watching a snail, inscribed "Abargelli Gallery Firenze."

Height, 17 inches

\$200 – 300



171



172



173

**171**  
**PROVINCIAL STYLE SIDE TABLE**  
With one pullout drawer and turned legs.  
26 <sup>3</sup>/<sub>8</sub> by 32 <sup>7</sup>/<sub>8</sub> inches  
\$100 – 200

**172**  
**PROVINCIAL STYLE SIDE TABLE**  
With two pullout drawers, brass hardware, and tapered legs.  
28 <sup>1</sup>/<sub>2</sub> by 40 by 25 <sup>1</sup>/<sub>2</sub> inches  
\$200 – 300

**173**  
**LADDER BACK SIDE CHAIR**  
With two shaped slats, rush seats, and turned double stretchers and legs.  
42 by 18 <sup>1</sup>/<sub>2</sub> by 17 inches  
\$100 – 200



174, partial



175



176

**174**  
**SET OF SIX CARVER BAR STOOLS**

With shaped crests, spindle backs, rattan seats with loose cushion, turned stretchers, and pad feet.

44 by 22 ¾ inches

\$300 – 500

**175**  
**COPPER MILK CHURN**

With swing handle.

Height, 16 inches; diameter, 12 inches

\$40 – 60

**176**  
**METAL STATUE OF AN INDIAN**

With upraised spear. Numbered "829/1000."

Height, 13 inches

\$40 – 60





177

**177  
TWO MISSION STYLE  
OAK BAR CHAIRS**

Modern armchairs, one with golden oak finish, both made in Mexico.

46 by 24 by 21 ½ inches

\$100 – 200



178

**178  
PAIR OF ASIAN HAMMERED  
COPPER KETTLES**

With turquoise accents and dragon faces.

Height, 12 ½ inches; diameter, 9 inches

\$100 – 200



179

**179  
GROUP OF COUNTRY  
STYLE FURNITURE**

Including a sofa table with four pullout drawers, turned front legs, and undertier, marked "Made in Spain." Together with an end table with a pullout drawer, incised carved decoration, and cabriole legs. Also includes two stools, all 20th century.

26 by 26 by 21 inches

\$300 – 500



179

179



180



181, partial

**180  
MODERN LEATHER  
CLUB CHAIR WITH OTTOMAN**

Featuring rolled arms and upholstered loose cushion.

Chair, 33 by 30 by 31 inches; ottoman, 19 by 30 by 24 inches

\$800 – 1,200

**181  
SET OF FOUR COLONIAL STYLE  
BAR CHAIRS**

With spindle backs and rush seats. *Two seats are stained.*

41 by 17 by 16 inches

\$100 – 200





182

**182  
COUNTRY STYLE  
OCCASIONAL TABLE**

With oval top and stretchers.

25 by 27 by 25 inches

\$100 – 200



183

**183  
BRADLEY AND HUBBARD BRASS  
DOUBLE BRANCH STUDENT LAMP**

With cased green shades. Marked "BH Duplex" on thumbwheels. Electrified.

22 by 25 by 10 inches

\$200 – 300



184

**184  
JACOBESAN STYLE GATELEG TABLE**

With circular tilting table top and block and turned legs.

25 by 27 by 21 inches

\$200 – 300



185

**185  
AMERICAN EMPIRE STYLE  
HALL TABLE**

With assembled pedestal base on casters, marked Cowin of Chicago. Attached to a modified large circular top with fold-out legs. *Distress to tabletop.*

Height, 30 ½ inches, diameter, 60 inches  
\$600 – 800



186

**186  
ROUND WOODEN COFFEE TABLE**

With four conjoined turned legs. *Areas of damage to the top.*

21 by 30 inches  
\$200 – 300



187

**187**

**HMS VICTORY 1765**

Large silver and parcel gilt model ship on stand.

34 by 28 by 9 inches

\$400 – 600





188



189



190

**188  
BRASS AND COPPER BUGLE  
WITH TASSEL**

Inscribed "Potters Aldershot LP."

7 by 12 inches

\$40 – 60

**189  
SIDE TABLE ON CERAMIC CASTERS**

With polychrome floral decoration on three pullout drawers and an undertier.

36 by 39 by 19½ inches

\$200 – 400

**190  
McVITIE AND PRICE DISPLAY RACK**

Wood with black and gold mirror sign.  
20th century.

53½ by 33 by 18 inches

\$100 – 200





191

**191**  
**WOODEN BUTTER CHURN**  
 Of typical cylindrical form with three wood bands.  
 35 by 6 ¾ inches  
 \$80 – 120



192

**192**  
**OVAL DROP-LEAF COFFEE TABLE**  
 On trestle base.  
 17 ½ by 49 by 58 inches  
 \$100 – 200



193

**193**  
**PATINAED BRONZE FIGURAL GROUP**  
 Of a cluster of children. Signed D. Weiser. Numbered "6/39."  
 14 by 13 ½ by 8 ½ inches  
 \$200 – 300



194

**194  
MARBLE STATUE  
OF A RENAISSANCE GIRL**

With long braided hair, seated, holding a casket.

63 1/4 by 31 1/4 by 16 inches

\$600 – 800





195

**195  
FEDERAL STYLE TILT-TOP TABLE**

With rectangular top and reeded column on tripod base. *Old repairs to top.*

29 by 29 by 18 inches

\$300 – 500



196

**196  
GEORGIAN STYLE PEWTER  
AND CERAMIC TEAPOT**

Egg shaped. Marked "pat. Jan 4 81" on base.

Height, 10 inches

\$200 – 300



197

**197  
OAK CREST ROLLTOP DESK**

With S-curve locking roll top, fitted interior, double pedestal vintage style with pullout drawers.

46 ½ by 32 by 49 inches

\$300 – 500



197, detail

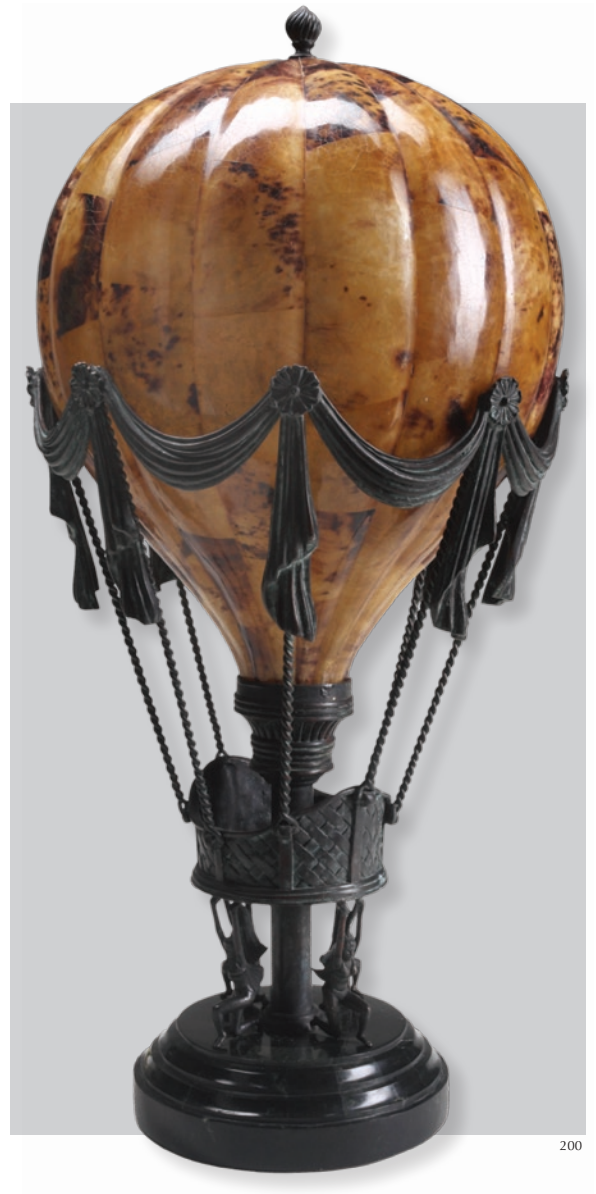




198



199, partial



200

**198  
CAPODIMONTE GEPETTO  
WITH PINOCCHIO**

With maker's mark and signed on base illegibly.

9 by 8 by 7 inches

\$100 – 200

**199  
PAIR OF MODERN  
ROCOCO STYLE ARMCHAIRS**

With carved decoration and tapestry style upholstery. *Staining to upholstery of one chair.*

36 ½ by 25 by 20 inches

\$150 – 250

**200  
HOT AIR BALLOON FORM  
TABLE LAMP**

With marble base, bronze mounts, and penshell balloon resembling tortoise shell. Maitland-Smith label on the base.

Height, 24 inches

\$200 – 400



201

**201**  
**STONE PIETA ON MARBLE BASE**

Unsigned.

9 by 8 ½ by 5 inches

\$100 – 200





202

**202  
PATINATED METAL ROOSTER  
ON A PERCH**

Polychrome with floral decoration.

60 by 30 by 20 inches

\$100 – 200



203

**203  
CHINESE CHECKERS TABLE  
ON STAND**

With bronze mounted decoration and polychrome.

Height, 29 inches; diameter, approximately 16 inches

\$100 – 200



204

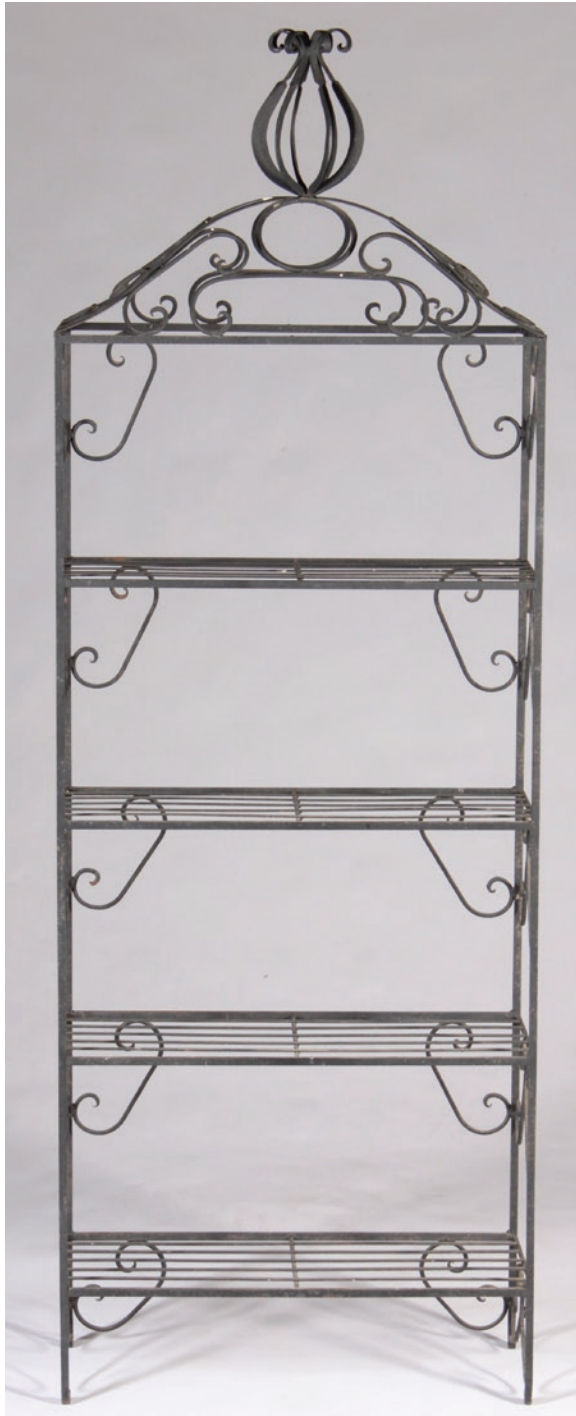
**204  
ELECTRIFIED HAND-PAINTED  
WOODEN TOY CHEST**

With Neverland emblem and lift-top lid.

16 by 31 ½ by 14 inches

\$200 – 300





205

**205  
VICTORIAN WROUGHT IRON  
SHELVING RACK**

With scroll decoration, four shelves.

87 by 30 by 13 inches

\$200 – 400



206

**206  
ANGLO-INDIAN  
THREE TIERED TABLE**

With bone and mother-of-pearl geometric inlay and block turned supports.

31 by 15 ½ by 15 ½ inches

\$100 – 200





207, partial





207, partial



207, partial



207, partial

## 207 CHINESE PARLOR SUITE

A modern living room set made of carved rosewood featuring elaborate dragon, floral, and foliate decoration with shell and mother-of-pearl inlay. Set features cabriole legs terminating in ball and claw feet, and red embroidered upholstered cushions encased in plastic. Comprised of one sofa with a loose upholstered cushion (45 ½ by 74 by 24 inches), four armchairs with loose upholstered cushions (43 by 27 ½ by 24 inches), pair of two-tiered end tables (31 by 25 by 19 inches), two jardinières (32 by 18 by 18 inches), and a coffee table (20 by 52 by 25 ½ inches).

\$2,000 – 3,000





208



208



209



210

**208  
GROUP OF BRASS ITEMS**

Comprised of a towel rack on tripod feet and a pair of tall candle holders.

Tallest height, 48 ½ inches

\$100 – 200

**209  
CHINESE CHIPPENDALE STYLE  
WRITING DESK**

With hinged slant top and pivoting brass candle holders.

\$600 – 800

**210  
SOUTHEAST ASIAN GILT METAL  
MODEL OF A TEMPLE**

With colored, beaded accents in a Plexiglass case.

24 by 9 by 9 inches

\$200 – 400



211

**211  
BAMBOO SHOOTING STICK**

With folding cane work seat.

Length, 34 1/2 inches

\$150 – 200



212

**212  
INDONESIAN PUPPET  
IN A DISPLAY CASE**

In a colorful sequined costume and seated on a cushion.

30 by 22 by 22 inches

\$200 – 300



213

**213  
VICTORIAN BRASS AND WOOD  
MAGAZINE STAND**

With scenic repoussé panels, scrolled ends, and tripod base. *Crack to wood panel.*

35 by 15 by 10 inches

\$200 – 300



214

**214  
VICTORIAN STYLE ADJUSTABLE  
SHAVING MIRROR**

With turned wood decoration and tripod base. Together with a pair of Jacobean style stools with carved seats, spiral turned legs and stretchers, and rosette motifs.

52 by 21 by 21 inches

\$200 – 400



214





215

**215**  
**PAIR OF NEOCLASSICAL STYLE**  
**GILDED FIGURAL TRIPOD STANDS**

With decorative glass bowls.

Height, 35 inches; diameter, 14 ½ inches

\$300 – 500



216

**216**  
**PAIR OF GILT METAL**  
**CANDLESTICKS**

With highly stylized decoration on  
tripodal claw feet atop a Y-shaped base.

Height, 12 inches; diameter, 5 ½ inches

\$100 – 150



217

**217  
COPPER UMBRELLA STAND**

Umbrella shaped, with allover embossed design.

Height, 40 inches; diameter, 16 inches

\$100 – 200



218

**218  
VICTORIAN STYLE  
UMBRELLA HALL STAND**

With hooks for coats and two removable water trays.

71 by 20 by 15 inches

\$200 – 300





219



220



221

**219**  
**BING & GRONDAHL**  
**PORCELAIN FIGURINE**

Two seated children reading a book together, number 1567, made in Denmark.

Height, 4 inches

\$100 – 200

**220**  
**WILLIAM AND MARY**  
**STYLE FOOTSTOOL**

With damask upholstery; *fraying on upholstery.*

18 by 23 by 16 inches

\$100 – 200

**221**  
**QUEEN ANNE STYLE HIGHBOY**

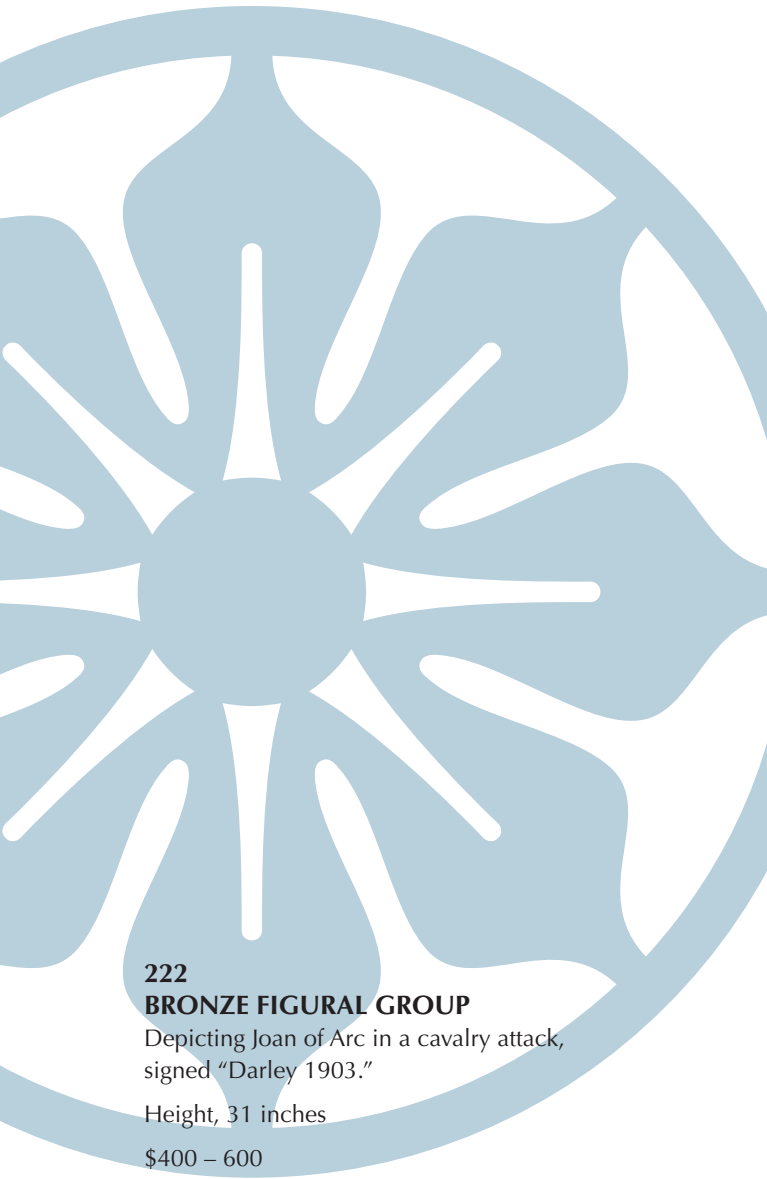
With batwing brasses, shaped apron, and cabriole legs on pad feet.

\$400 – 600





222



**222**

**BRONZE FIGURAL GROUP**

Depicting Joan of Arc in a cavalry attack, signed "Darley 1903."

Height, 31 inches

\$400 – 600

**223**

**TRI-HANDLED BRITISH SILVER AND WOOD WINE COOLER**

With shield-shaped monogram plate.

Height, 7 inches; diameter, 5 inches

\$200 – 300

**224**

**CIRCULAR TRIPOD OCCASIONAL TABLE**

With figured top, turned base, and snake feet.

Height, 27 inches; diameter, 24 inches

\$200 – 300



223



224





225



225



226

225

**ORNATE CARVED PARLOR SUITE**

Comprised of two armchairs and a sofa, with pierced carved frame and button-tufted green leather. 20th century.

Chairs, 44 ½ by 37 ½ by 21 inches; sofa, approximately 46 by 80 by 21 inches

\$800 – 1,200

226

**QUEEN ANNE STYLE ARMCHAIR**

With vase splat back, floral needlepoint upholstery, and cabriole legs with stretchers.

39 by 26 inches

\$100 – 200



227

227

**RAMON PARMENTER  
(AMERICAN, B. 1954)**

"He Loves Me," patinated bronze of a girl in a dress plucking dandelion petals. Signed "Ramon Parmenter." Numbered "27/124 @2002"

14 by 8 by 10 inches

\$500 – 700





228



229

**228  
ROMAN FIGURAL BUST**

Mixed-color marble bust of a Roman warrior.

Height, 36 inches

\$500 – 1,000

**229  
GILDED FLOOR VASE**

With gilded dragon handles and scalloped lip. In black with rust and ivory scenic panels featuring Grecian figures and architecture.

Height, 42 inches

\$200 – 400



230

**230  
MIXED METAL FIGURAL  
SEVEN LIGHT CANDELABRA**

Featuring a cherub holding a flowering vine.

Height, 66 inches

\$300 – 500





231



232



232



232

**231  
BRONZE WINGED  
CUPID SCULPTURE**

With polychrome patination.

Height, 47 inches

\$200 – 400

**232  
THREE ASSORTED PEWTER PLATES**

One plate labeled "Ellis" with faded marks, one incised in French with two hearts and dated "1831" with faded marks, and one labeled "Thomas Swanson, London circa 1765" with faded marks.

Respective diameters: 12 inches, 13 <sup>7</sup>/<sub>8</sub> inches, 15 inches

\$250 – 350



233

**233**  
**PAIR OF GILT METAL**  
**JARDINIÈRE STANDS**

With figural plaques featuring lapis and malachite panels.

37 ½ by 28 by 12 inches

\$400 – 600

**234**  
**STIMSON SILVER-PLATED PITCHER**

With allover engraved decoration and floral finials.

8 by 5 by 5 inches

\$100 – 200



234







236

**235  
LAPIS AND GEMSTONE  
TERRESTRIAL GLOBE**

In a brass holder.

Height, approximately 45 inches;  
diameter, approximately 38 inches

\$1,000 – 2,000

**236  
BLAIR MUHLESTEIN  
(AMERICAN, 20TH CENTURY)**

"Bunny Hug," bronze statue with colored  
patination depicting a girl holding stuffed  
animals on a rotating base.

Height, 22 inches

\$400 – 600



237

**237  
NEOCLASSICAL STYLE TABLE**

With polychrome gilding, support for the  
glass top comprised of three monopod  
sphinxes forming a triangular base with a  
central lotus standard.

30 ¼ by 39 ¼ inches

\$300 – 500





**238  
STANDING YOUTH HOLDING  
A POSY**

In white marble.

56 by 21 inches

\$200 – 300

**239  
BRONZE AND MARBLE  
FIGURAL CLOCK**

With parcel gilding. Clock on a pedestal-shaped base flanked by cherubs and maidens.

46 by 27 by 10 inches

\$300 – 500



239





240

**240**  
**RAMON PARMENTER**  
**(AMERICAN, B. 1954)**

"Silhouettes," bronze girl with colored patination, dressed in nightgown and holding an oil lamp, signed and numbered 24/48.

44 by 16 by 23 inches

\$3,000 – 5,000

**241**  
**ENHANCED GICLÉE ON CANVAS**  
**OF BROOKE SHIELDS**

Signed lower right "C. Ross" and signed lower left "Brooke XX," numbered 79/145, and depicting the actress in a yellow truck.

46 by 46 inches including frame

\$200 – 300



241





242

**242**

**SCOTT JACOBS**  
(AMERICAN, 20TH CENTURY)

"Cleared For Take-off," acrylic on linen,  
signed center right and dated 1998.

38 ½ by 56 ½ inches including frame

\$2,000 – 3,000

**243**

**M. ARIAN (20TH CENTURY)**

Two boys feeding a goat in a barn, oil on  
canvas, signed lower right.

33 ¼ by 37 inches including frame

\$100 – 200



243





244

**244**  
**AFTER JEAN ANTOINE HOUDON**  
**(FRENCH, 1741–1828)**

"Cupid" bronze figure with colored patination, signed "Houdon."

Height, 26 inches

\$300 – 500



245

**245**  
**BRASS BUILDING FORM KEY RACK**

On spiral-twist tripod stand.

43 ½ by 15 ½ by 16 ½ inches

\$100 – 200

**246**  
**BRONZE FIGURE**  
**PLAYING THE PAN FLUTE**

Signed on the foot "F. de Lucca,"  
mounted on black marble base.

26 ½ by 15 inches

\$1,000 – 1,500



246





247

**247**  
**BRONZE FIGURAL STATUE OF**  
**APOLLO AND WINGED VICTORY**

With parcel-gilt decoration at the base.

54 by 27 inches

\$800 – 1,200

**248**  
**ROLAND KR-1070 DIGITAL PIANO**

In black lacquer finish.

39 ½ by 59 by 59 inches

\$1,000 – 2,000



248





249

**249**  
**ANTIQUE CERAMIC LINED**  
**OAK STEIN**

With silver mounts.

Height, 10 inches; diameter, 6 inches

\$100 – 200



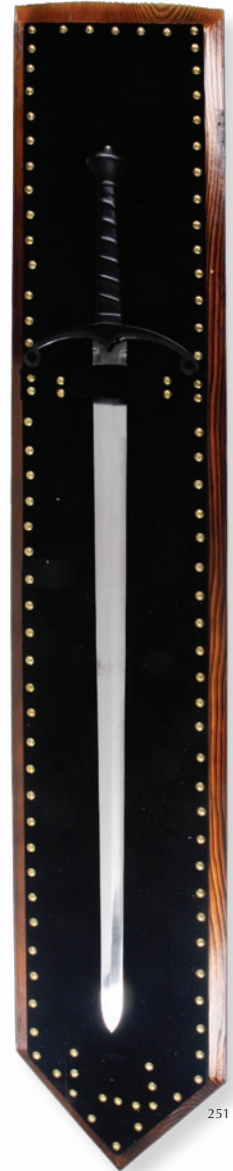
250

**250**  
**20TH CENTURY DECORATIVE**  
**TWO-HANDED BROADSWORD**

With curving gilt crossguard and medallion-shaped pommel. On a wood mounting with velvet and brass studding.

Sword, 48 by 8 inches; mounting, 62 by 11 inches

\$60 – 80



251

**251**  
**20TH CENTURY DECORATIVE**  
**TWO-HANDED BROADSWORD**

With pierced crossguard. Stamped "India." On a wood mounting with velvet and brass studding.

Sword, 46 by 8 3/4 inches; mounting, 62 by 11 inches

\$60 – 80



252

**252  
20TH CENTURY DECORATIVE  
SINGLE-HANDED SWORD**

With simple crossguard and gold-painted hilt. Marked "India." On a wood mounting with velvet and brass studding.

Frame, 53 1/2 by 11 1/2 inches; sword, 41 by 9 inches

\$60 – 80



253

**253  
BOB BYERLEY  
(AMERICAN, B. 1941)**

"Once Upon A Time," print signed and numbered 66/150. Image depicts girl sleeping on desk and dreaming of pirate ships.

28 1/4 by 21 1/4 inches including frame

\$100 – 200



254

**254  
TIGER SHARK KNIFE**

A 2002 Gil Hibben Tiger Shark knife on presentation stand.

8 by 16 1/2 by 5 inches

\$80 – 120





255

**255  
MARBLE STATUE OF A CHILD**

Standing with upraised arms. Signed "Ste.  
Galletti Roma 1904."

Height, 42 inches

\$600 – 800



256

**256  
SET OF ROCOCO STYLE  
FIRE TOOLS**

Comprised of a brush, shovel, poker, and stand.

Height, 30 inches

\$100 – 200



257

**257  
20TH CENTURY WILKINSON  
DECORATIVE TWO-HANDED  
BROADSWORD**

With elaborate foliate engraving on the blade, a gilt crossguard, and wooden grip. Marked "Wilkinson, Made in England." On a wood mounting with velvet and brass studding.

Sword, 43 by 8 1/2 inches; mounting, 52 by 11 inches

\$100 – 150



258

**258  
20TH CENTURY DECORATIVE  
SINGLE-HANDED SWORD**

With blade engraved with ships and foliate decoration, crossguard in the form of two grotesques, red velvet-wrapped hilt, and pommel with embossed coat of arms. On a wood mounting with velvet and brass studding.

Frame, 53 1/2 by 11 1/2 inches; sword, 45 by 8 inches

\$80 – 120





259



260



261

**259  
REPRODUCTION HORSE  
AND SULKY WEATHERVANE**

Copper with applied green patination.  
*Broken front leg.*

19 by 30 by 8 ½ inches

\$200 – 400

**260  
BOB BYERLEY  
(AMERICAN, B. 1941)**

"Cloudbuster Airlines," print by Byerley,  
signed in the plate and by hand in gold  
ink. Image depicts three children and a  
dog playing at flying.

37 ½ by 29 ½ inches including frame

\$50 – 100

**261  
ANTIQUE STYLE CHEST  
OF DRAWERS**

Featuring seven pullout drawers with  
brass pulls and a central two-door  
cabinet.

\$400 – 600



262

**262  
20TH CENTURY DECORATIVE  
TWO-HANDED BROADSWORD**

With endless knot decoration on blade, faux jewel-encrusted crossguard, and embossed dragon head on medallion-shaped pommel.

Sword, 42 by 9 1/4 inches; mounting, 62 by 11 inches

\$60 – 80



263

**263  
20TH CENTURY DECORATIVE  
CURVED TWO-HANDED SWORD**

With engraved stork on blade, V-shaped crossguard, and a wrapped blue velvet hilt. Stamped "India." On a wood mounting with velvet and brass studding.

Sword, 41 1/2 by 5 1/2 inches; mounting, 62 by 11 inches

\$60 – 80



264

**264  
LADDER BACK  
ROCKING ARMCHAIR**

With rush seat and turned front stretcher.

38 by 20 by 21 1/2 inches

\$100 – 200





265

**265  
MARBLE EAGLE SCULPTURE**

Signed "Ora" on the rear base.

Height, 16 inches

\$200 – 400



267



267



267

**267  
THREE ASSEMBLED PAIRS OF  
SPELTER CANDLESTICKS**

One set a pricket pair, one set with baluster standards, and one set with turned standards.

Tallest height, 12 inches

\$100 – 200



266

**266  
VICTORIAN STYLE BRASS AND  
IRON SHELVEING RACK**

With four shelves.

84 by 72 by 16 inches

\$300 – 500

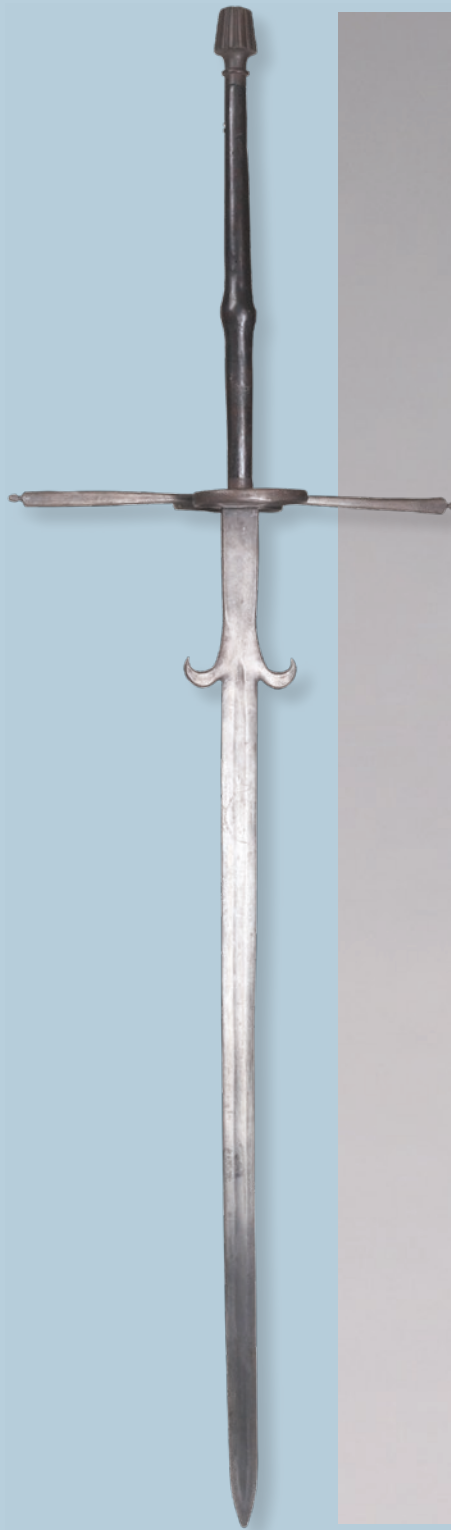


268



268

**268**  
**TWO OAK PRIE-DIEU STALLS**  
 One with loose cushion, one without.  
 29 ½ by 21 by 15 ½ inches  
 \$100 – 200



269

**269**  
**MEDIEVAL STYLE SWORD**  
 Made of hammered metal. Featuring a stained wood handle.  
 66 by 20 ¼ by 7 inches  
 \$200 – 400



270

**270**  
**WOODEN SCEPTER WITH GILDED MOUNTS**  
 With a raised silver emblem on the orb.  
 Length, 55 ½ inches  
 \$200 – 400





271

**271  
MODERN PERSIAN STYLE  
PRAYER RUG**

With cream and red hexagonal patterns.

97 by 36 ½ inches

\$200 – 400



272

**272  
PERSIAN STYLE RUNNER**

With red, blue, and cream. This rug laid on the staircase in the entryway to the main house at Neverland Ranch.

103 by 31 inches

\$300 – 500





273

**273  
TERRESTRIAL FLOOR GLOBE  
IN STAND**

With brass meridian and turned base on tripod feet with casters. Compass at base.

38 by 22 inches

\$1,200 – 1,800



274

**274  
PERSIAN STYLE RUNNER**

Featuring red and blue stitching. This rug laid on the staircase in the entryway to the main house at Neverland Ranch.

125 by 32 inches

\$400 – 600





275

**275  
PERSIAN STYLE RUG**

Orange and brown.

176 by 41 inches

\$300 – 500



276

**276  
STAINED OAK BOOKSHELF**

With molded cornice and one pullout drawer at base.

84 by 40 by 15 inches

\$200 – 300





277

277

**MODERN PERSIAN RUG**

Blue and red patterned rug with cream fringes. *Some staining.*

61 by 46 inches

\$100 – 200



278

278

**VICTORIAN STYLE  
ROTATING BOOK RACK**

With scrolled brass rack and feet and oak base.

10 by 10 ½ by 10 ½ inches

\$100 – 200



279

279

**MODERN RUG**

With blue and orange geometric patterns.

166 by 123 inches

\$300 – 500





280



281



282

**280  
POLISHED BRASS MENU  
DISPLAY STAND**

Containing a printed Neverland Ranch menu.

Height, approximately 42 inches

\$200 – 300

**281  
GIANT HUMMEL FIGURINE**

Seated boy with umbrella. Marked on base and signed.

8 by 9 by 7 inches

\$100 – 200

**282  
GEORGIAN STYLE LETTER BOX**

With two letter slots and brass hardware and shield-shaped escutcheon.

5 7/8 by 12 1/4 by 6 1/8 inches

\$100 – 200



283



284



285

**283**  
**DROP-LEAF COFFEE TABLE**  
Oval shape with Marlborough legs.  
20 ½ by 60 ¾ by 44 ½ inches  
\$100 – 200

**284**  
**BRONZE FIGURAL GROUP**  
Depicting three children on a bench,  
signed and dated "R. Tonti, 1930."  
Height, 9 inches  
\$300 – 500

**285**  
**RAMON PARMENTER**  
(AMERICAN, B. 1954)  
"Teaching Teddy," giclée on canvas,  
signed lower right and dated 1995.  
42 ½ by 56 inches including frame  
\$200 – 300





286

**286  
PHOTOGRAPH OF TWO  
VICTORIAN CHILDREN**

Housed in a gilded frame. Signed and dated 1907.

24 by 12 by 11 inches

\$100 – 200



287

**287  
MODERN PERSIAN STYLE RUG**

Rug with cream and burgundy patterns. This rug was laid in Michael Jackson's private office on the Neverland Estate.

78 by 120 inches

\$300 – 500



288

**288  
BOB BYERLEY  
(AMERICAN, B. 1941)**

"The Incredible Shrinking Machine," giclée on canvas, signed and numbered 135/500.

37 by 45 inches including frame

\$200 – 300





289

**289**

**MODERN RUG**

With off-white geometric patterns.

179 by 134 inches

\$200 – 400



290

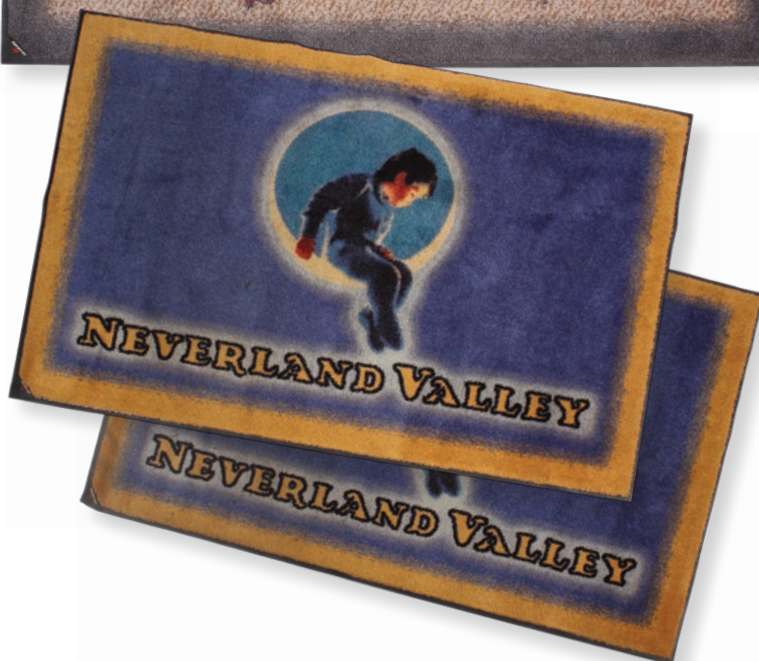
**290**

**SET OF FOUR NEVERLAND RUGS**

All with different custom Neverland graphics.

Various sizes

\$100 – 200







291



293

**291**  
**WOODEN NIGHTSTAND TABLE**  
With dark stain and one pullout drawer featuring a cast oval brass handle with Greek scene.

27 ¾ by 18 ¾ by 16 ¾ inches

\$200 – 300

**292**  
**SQUARE WOODEN OCCASIONAL TABLE**  
With tapered legs.

30 ¾ by 36 by 30 ⅝ inches

200 – 300

**293**  
**RAMON PARMENTER**  
**(AMERICAN, B. 1954)**

"Delights," bronze statue with colored patination of a little girl eating ice cream and holding three glass balloons. Signed; edition limited to 74.

Height, 27 ½ inches

\$2,000 – 3,000



294

**294**  
**PROVINCIAL STYLE**  
**DROP-LEAF WORK TABLE**

With two pullout drawers and turned legs.

29 by 36 ½ by 24 inches

\$200 – 300

**295**  
**BOB BYERLEY**  
**(AMERICAN, B. 1941)**

"Deputies," print with remarque lower left, signed lower right and marked artist's proof in pencil lower left. Inscribed to Michael Jackson on verso, dated 1994. Image depicts two girls in cowboy dress.

34 ¾ by 30 ¼ inches including frame

\$200 – 300



295

**296**  
**SMALL MARBLE-TOPPED**  
**PEDESTAL STAND**

With four column legs, brass mounts, and green marble top.

16 by 12 by 12 inches

\$100 – 200



296





297



297, detail

**297**  
**AFTER ANTONIN MERCIÉ**  
**(FRENCH, 1812–1877)**

"Gloria Victis," parcel gilt and bronze statue mounted on a black marble socle, signed "A. Mercie" on base.

99 by 58 inches

\$2,000 – 3,000



298



299



300

**298**

**BRONZE SCULPTURE "ELIJAH"**

Depicting the head of an old man. Base bearing a plaque reading "'Elijah' / David Hillman." Signed on back and dated 1975.

13 by 10 ½ by 8 inches

\$100 – 200

**299**

**SINGLE ARM STUDENT LAMP**

Made by Imperial. With an etched glass shade. Electrified.

20 ½ by 11 by 6 inches

\$100 – 150

**300**

**JACOBAN STYLE DINING TABLE**

With carved apron and turned legs.

30 by 84 by 30 inches

\$300 – 500





301

**301  
BRONZE FIGURAL PEDESTAL TABLE**

Top supported by a Hercules figure.

52 by 33 inches

\$200 – 400



302

**302  
SET OF MONOGRAMMED  
ANDIRONS**

With MJ initials.

29 by 16 by 19½ inches

\$100 – 200



303

**303  
DANBURY MINT TWIN TOWERS  
COMMEMORATIVE STATUE**

With inscription plaque on base.

9 by 10 by 8 inches

\$50 – 100



304

**304**  
**AFTER P.J. MENE**  
**(FRENCH, 1810–1879)**

Bronze statue of a horse and rider, with colored patination, signed "PJ MENE" on base.

\$400 – 600





305

**305  
MARBLE STATUE OF A BOY  
WITH A MOUSETRAP**

Seated on a stool.

Height, 36 inches

\$200 – 300



306

**306  
HAND-COLORED VICTORIAN  
ENGRAVED PRINT**

"Charity," by C. Lucien, depicting  
children in a landscape.

14 ½ by 12 ½ inches including frame

\$100 – 200



307



307



307

### 307 FRAMED SET OF WILL'S TOBACCO CARDS

"Railway Engines," dated 1936. Together with a pair of framed locomotive stamps and silk cachets from the 1980s.

Largest, 13 ½ by 16 ½ inches including frame

\$100 – 200

### 308 SET OF THREE COLORED PRINTS

Late 19th and early 20th century colored scenes from fashion journals such as *Revue de la Mode* and *Moniteur de la Mode*.

Each 20 by 16 ¼ inches including frame

\$200 – 300



308



308



308





309

**309  
BRONZE FIGURAL GROUP  
OF SLEDDING CHILDREN**

With colored patination, signed indistinctly on base and numbered "35/50."

26 by 26 by 13 inches

\$300 – 500



310

**310  
FEDERAL STYLE KETTLE STAND**

On a fluted stand with tripod base and spade feet.

42 by 16 inches

\$100 – 200



311



311

**311  
TWO VICTORIAN ADJUSTABLE  
SHAVING TABLES**

One with spiral brass column and paw foot base on brass casters, the other with solid column and paw foot base without casters.

Each 27 by 19 inches

\$200 – 300



312



312

**312  
PAIR OF PRINTS FROM FORES'  
COACHING RECOLLECTIONS**

"Changing Horses" and "The Olden Times," both hand-colored lithographs published in 1843.

25 by 33 inches

\$300 – 500





313



315, partial



315, partial



314

**313**  
**NELDA PIEPER**  
**(AMERICAN, 20TH CENTURY)**  
 "Taking the Bait," enhanced giclée on canvas, signed lower left.  
 34 by 40 inches including frame  
 \$200 – 300

**314**  
**PAIR OF UPHOLSTERED**  
**ARMCHAIRS**  
 With turned arms and stretchers.  
 35 by 23 ½ by 25 ½ inches  
 \$100 – 200

**315**  
**SET OF LINDA BAILEY**  
**PORCELAIN ITEMS**  
 Comprised of two rabbits with floral wreaths around their necks and two candlesticks with similar floral wreaths. Marked on base.  
 6 ½ by 5 by 5 ½ inches  
 \$200 – 400



316

**316  
BRASS AUTOMATON  
MUSICAL BIRD IN CAGE**

Animated singing bird with feathers. Base marked "KG," "Made in Germany."

Height, 12 inches

\$200 – 300

**317  
NORMAN ROCKWELL  
(AMERICAN, 1894–1978)**

"Three Boys Fishing," lithograph, signed in the plate and in pencil lower right, numbered 118/200.

30 ½ by 27 inches including frame

\$200 – 400

**318  
M. ARIAN (20TH CENTURY)**

Oil on canvas depicting two boys, one sleeping on a bench. Signed on bench.

33 ½ by 29 inches including frame

\$100 – 200



317



318





319



320, partial



320, partial



320, partial



320, partial

**319**  
**BRONZE AND MARBLE**  
**PORTRAIT BUST OF A MAIDEN**  
Signed "Naquet."

Height, 15 1/2 inches

\$200 – 400

**320**  
**GROUP OF ASSEMBLED**  
**PEWTER ITEMS**

Comprised of two lidded jugs with maker's marks, 19th century British pewter gelatin mold, Portuguese metal inkstand tray, and six-sided lidded container.

Tallest, 8 1/2 inches

\$300 – 500

**321**  
**GROUP OF WATERFORD**  
**SALT AND PEPPER SHAKERS**

With sterling mounts.

Height, approximately 4 inches

\$100 – 200



321





322



323



**322**  
**ROCOCO STYLE RIDGED**  
**GLASS BOWL**

With gilded cherub handle mounts and foliate rim and base.

Height, 19 inches; diameter, 16 inches

\$200 – 400

**323**  
**ASSEMBLED GROUP**  
**OF THREE BOXES**

Comprised of a brown silk box with a petit point bird on the cover, an Italianate wood jewelry box with polychrome inlaid lid, and brass and enamel decorated box in the Islamic taste.

Largest, 9 ½ by 6 inches

\$100 – 200

**324**  
**BRONZE STATUETTE OF A MAN**

With carved ivory face. Marked "LNJL Paris."

This lot will only be shipped domestically.

Height, 7 ½ inches

\$100 – 200



324





325



325

### 325

#### PAIR OF ROMAN FIGURAL BUSTS

Two mixed color marble busts of Roman noblemen, each attached to a square stepped socle.

Height, 38 inches

\$1,000 – 2,000

### 326

#### ROMAN FIGURAL BUST

Mixed color marble bust of a Roman nobleman, attached to a square stepped socle.

Height, 32 inches

\$500 – 1,000



326







THE COLLECTION OF THE KING OF POP

# Michael Jackson

*Furniture & Decorative Art*

LOTS 327 – LOTS 546





327



328



329

**327  
MODERN AMERICAN  
EMPIRE STYLE SOFA**

With carved decoration, scrolled arms, button-tufted floral tapestry upholstery, and ball feet.

37 by 91 by 29 inches

\$600 – 800

**328  
LLADRO FIGURAL  
GROUP OF TWO CHILDREN**

In a covered baby carriage, J. Aliena, 2001, number 6794, retired.

Height, 11 ¼ inches

\$200 – 300

**329  
LLADRO FIGURINE  
“MISCHIEVOUS MOUSE”**

Little girl in mouse costume with a cat on a ball, F. Polope, 1992, number 5881.

Height, 6 inches

\$100 – 200



330

**330  
LLADRO FIGURAL  
GROUP "CIRCUS TRAIN"**

With a conductor, three cars, and four passengers, A. Ramos, 1987, number 1517, retired.

Height, 9 3/4 inches

\$1,000 – 2,000

**331  
SIGNED AND DEDICATED  
LLADRO FIGURE OF A CLOWN  
WITH PUPPIES**

"Little Pal," signed "To Michael" by J. Lladro, V. Lladro, and Jim Lladro. Dated "9.19.92." Stamped "Collectors Society 1985 First Issue." Retired.

9 by 3 inches

\$400 – 600



331





332



333



334

### 332

#### **LLADRO FIGURINE – LEPRECHAUN**

Reclining in a flower bed, J. Puche, 1990, number 1721.

Height, 4 inches

\$100 – 200

### 333

#### **LLADRO FIGURINE – BOY IN OVERALLS**

With flowers in his pockets, A. Ramos, 1997, number 7650, retired.

Height, 10 ½ inches

\$100 – 200

### 334

#### **LLADRO FIGURINE – ANGEL PLAYING HARP**

Seated on a rock form, M. Santaaulalia, 1999, number 6628, retired.

Height, 5 ½ inches

\$100 – 200



**335**  
**LLADRO FIGURINE –**  
**GIRL WITH BUTTERFLIES**  
 A. Llorens, 1993, number 6963.

Height, 8 ¼ inches

\$100 – 200

**336**  
**LLADRO FIGURAL GROUP –**  
**GEPETTO AND PINOCCHIO**  
 Together with a cat, S. Furio, 1986,  
 number 5396, retired.

Height, 9 ½ inches

\$200 – 400

**337**  
**PAIR OF LLADRO FIGURINES –**  
**ANGEL PLAYING**  
**STRING INSTRUMENT**  
 Seated, F. Garcia, 1969, number 4537  
 (one without an item number on the  
 base).

Height, 4 ¾ inches

\$100 – 200







338

**338**  
**LLADRO FIGURAL GROUP "LOVE STORY LLADRO"**

A couple on a white horse. Inscribed under base "To Michael" with three signatures and dated 9-19-92, J. Puche, 1993, this example unnumbered, but Lladro number 5991, retired.

13 by 14 by 7 inches

\$600 – 800



339



339

**339**  
**TWO COMPANION LLADRO**  
**FIGURAL GROUPS**

One a father reading to his son in bed, number 5899, the other a mother tucking in her daughter, number 5900, J. Coderch, 1992, both retired.

Tallest, height 8 ¼ inches

\$300 – 500

**340 (not pictured)**  
**PAIR OF LLADRO FIGURINES –**  
**CHILDREN RIDING**  
**CAROUSEL HORSES**

One a boy, number 1470, the other a girl, number 1469, both J. Puche, 1985, retired.

Height, 15 inches

\$400 – 600





341, partial

### 341

#### PAIR OF LLADRO FIGURINES

Each depicting a cherub standing in a birdbath, J. Aliena, 1998, number 6458, retired.

Height, 10 <sup>3</sup>/<sub>4</sub> inches

\$200 – 400



342



342

### 342

#### PAIR OF LLADRO FIGURINES IN NIGHTDRESS

One a boy with extended arms, number 6482, the other a boy with crossed arms, number 6483, both B. Jauregui, 1997, retired.

Tallest, height 10 <sup>3</sup>/<sub>4</sub> inches

\$100 – 200



343



344

**343**

**LLADRO MATTE BUST OF A GIRL**

Marked 1987 on base, no number. Some staining to figure on head and neck.

14 by 13 by 10 inches

\$100 – 150

**344**

**GEORGIAN STYLE  
OCCASIONAL TABLE**

With oval top, embellished apron, tapered legs, and pad feet. *Distress to tabletop.*

26 by 31 ½ by 25 inches

\$200 – 400



345

**345**

**OTTOMAN STYLE BIRDHOUSE**

Modern large wooden bird cage made in Indonesia.

110 by 41 ½ by 41 ½ inches

\$600 – 800





346



347



348

**346**  
**LLADRO FIGURAL GROUP**  
**"HEAVEN AND EARTH"**

Two allegorical figures, F. Polope, 1998, limited edition 271/5000, Lladro number 1824, retired.

Height, 12 inches

\$300 – 500

**347**  
**LLADRO FIGURAL GROUP OF**  
**TWO BABIES IN A BASSINET**

Both sleeping, A. Ramos, 1994, number 6127, retired.

Height, 7 inches

\$100 – 200

**348**  
**LLADRO CUPID FIGURINE**

Seated cherub playing an instrument.

\$100 – 150



349

**349  
LLADRO FIGURAL GROUP OF A  
GIRL AND BOY ON A BENCH**

With a basset hound on the bench edge.  
Unnumbered.

Height, 6 ½ by 7 by 5 ½ inches

\$100 – 200

**350  
TWO COMPANION LLADRO  
FIGURINES OF HAWAIIAN BOYS**

One playing the flute, number 6310, and  
one with a conch shell and bird on his  
foot, number 6309, both M. Santaaulalia,  
1996, retired.

Height, 6 ½ inches

\$200 – 400

**351  
PAIR OF LLADRO  
SPORTS FIGURINES**

One a seated baseball player, number  
6137, the other a football player, number  
6135, both J. Coderch, 1994, retired.

Tallest, height 8 ¾ inches

\$200 – 400



350



351





352



353

**352  
LLADRO FIGURAL GROUP  
"TO THE RIM"**

Depicting three basketball players, limited edition, numbered 129/1500, J. Coderch, 1995, number 1800, retired.

Height, 27 inches

\$600 – 800

**353  
TWO LLADRO FIGURINES OF  
CHILD BASKETBALL PLAYERS**

One kneeling with the ball, number 6136, the other sitting on a stool with the ball, number 6091, both J. Coderch, 1994, retired.

Height, 9 inches

\$200 – 400

**354  
LLADRO FIGURAL GROUP  
OF MOTHER AND BABY**

In a rocking chair, F. Garcia, 1992, number 5864, retired. Limited edition of 1500.

Height, 17 ¼ inches

\$300 – 500



354





355



356

**355  
LLADRO FIGURAL GROUP OF  
A GIRL AND BOY IN A BIPLANE**

Depicted in mid conversation, J.  
Coderch, 1990, number 5698, retired.

Height, 6 <sup>3</sup>/<sub>4</sub> inches

\$200 – 300

**356  
LLADRO FIGURINE  
OF AN AVIATOR BOY**

Standing and dressed in pilot gear, F.  
Catala, 1997, number 6451, retired.

Height, 9 inches

\$100 – 200



357

**357  
LLADRO FIGURINE –  
GIRL WITH CAT**

Being weighed on a scale, R. Torrijos,  
1988, number 5474, retired.

Height, 6 <sup>3</sup>/<sub>4</sub> inches

\$100 – 200

**358  
PAIR OF LLADRO FIGURINES –  
SLEEPING BOY AND GIRL  
IN ROCKING CHAIR**

Boy sitting next to a toy pony, 1992,  
number 5846, and girl holding a doll,  
1987, number 5448, both J. Puche,  
retired.

Height, 4 <sup>3</sup>/<sub>4</sub> inches

\$200 – 400

**359  
LLADRO FIGURAL GROUP  
OF A FATHER AND SON**

Playing with a ball, J. Huerta, 1993,  
number 6001, retired.

Height, 9 inches

\$200 – 400



358



359





360

**360  
SIGNED AND DEDICATED  
LLADRO FIGURE OF A BOY  
WITH A SOCCER BALL**

"Starting Forward," signed "To Brett" by J. Lladro, V. Lladro, and Jim Lladro. Dated "9.19.92." Retired.

9 by 3 ½ inches

\$250 – 350



361

**361  
LLADRO FIGURINE –  
GIRL SOCCER PLAYER**

Kneeling with a ball, A. Ramos, 1994, number 6185, retired.

Height, 6 ¾ inches

\$100 – 200



362

**362  
LLADRO FIGURINE OF A  
BASEBALL PLAYER**

Seated on a bench, J. Coderch, 1994,  
number 6090.

Height, 7 inches

\$100 – 200



363

**363  
LLADRO FIGURINE OF A  
HOCKEY PLAYER**

Kneeling with a hockey stick, J. Coderch,  
1994, number 6108.

Height, 7 ½ inches

\$100 – 200





364



365

**364**

**LLADRO FIGURAL  
GROUP OF CHILD AND ADULT**

Depicting a seated sleeping prince  
attended by a footman, A. Ramos, 1997,  
number 6385, retired.

Height, 18 inches

\$200 – 300

**365**

**INSCRIBED PORTRAIT SCULPTURE  
OF MICHAEL JACKSON**

Signed by Juan Huerta, dated 1992.

Commemorating Michael Jackson's 1992  
visit to the Lladro factory. Bronze image  
of a seated Michael Jackson dressed as a  
king, with an attached inscribed plaque.

12 by 7 ½ by 8 ¾ inches

\$400 – 600





366



367

**366**

**LLADRO FIGURAL GROUP OF A  
MOTHER PULLING A WAGON**

With a child holding a pumpkin. Both  
dressed for the cold.

Height, 13 inches

\$200 – 300

**367**

**LLADRO MANTEL CLOCK**

"Angelic Time," F. Polope, 1993,  
number 5973, retired.

Height, 11 ½ inches

\$300 – 500





368



369

**368  
PAIR OF LLADRO FIGURINES –  
GIRL AND BOY IN A HIGHCHAIR**

One a girl with a teddy bear, number 6299, the other a boy with a rubber duck, number 6300, both J. Coderch, 1996, retired.

Height, 6 <sup>3</sup>/<sub>4</sub> inches

\$200 – 400

**369  
LLADRO FIGURAL GROUP –  
MOTHER WITH DAUGHTER**

J. Huerta, 1987, number 1527, retired.

Height, 8 <sup>3</sup>/<sub>4</sub> inches

\$100 – 200



370

**370**  
**PAIR OF LLADRO FIGURINES –**  
**NAPPING BOY AND GIRL**

Boy in a pink chair with dog, number 6549, girl in a blue and white striped chair with cat, number 6550, both R. Torrijos, 1998, retired.

5 1/4 by 4 by 3 inches

\$200 – 400

**371**  
**LLADRO FIGURAL GROUP OF AN**  
**OLD FISHERMAN AND A BOY**

Seated on a crate, S. Furio, 1984, number 5207, retired.

Height, 11 inches

\$100 – 200



371





372

**372  
LLADRO FIGURE OF A BOY  
WITH A BAT**

"Next at Bat." Impressed "5828." Retired.

9 ½ by 5 inches

\$100 – 200

**373  
LLADRO FIGURAL GROUP  
OF FOUR CHILDREN**

"Puppy Dog Tails." Numbered "5539." Retired.

15 by 16 by 8 inches

\$200 – 400



373







374

**374**

# **LLADRO CINDERELLA'S ARRIVAL**

Monumental Lladro sculpture of Cinderella's arrival to the ball, with coach, horses, and attendants. F. Polope, 1994, number 1785. Signed and marked under base.

26 by 47 by 18 inches

\$5,000 – 7,000





375

**375  
LLADRO FIGURE OF WOMAN  
WITH A FLOWER BASKET**

"Spring Courtship," signed by Salvador Debon and Angeles Cabo. Numbered "No.149." Impressed "1818." Retired.

24 ½ by 13 by 12 inches

\$600 – 800



376

**376  
LLADRO FIGURE OF A  
SWADDLED BABY**

"All Bundled Up," by NAO. Marked "1340."

6 ½ by 4 by 6 inches

\$40 – 60

**377  
LLADRO FIGURAL GROUP  
OF A FAMILY**

"Portrait of a Family," signed by Francisco Polope and Angeles Cabo. Numbered "No. 156." Impressed "1805." With fitted base.

17 by 12 by 13 inches

\$700 – 900



377





378

**378  
LLADRO FIGURINE OF A BUNNY**

Standing, with flowers, J. Huerta, 1994,  
number 6100.

Height, 5 ½ inches

\$100 – 200



379

**379  
LLADRO FIGURINE OF GIRL  
WITH BOUQUET**

In mid stride.

9 by 4 by 4 inches

\$100 – 200



380

**380  
LLADRO FIGURAL GROUP  
OF COUPLE IN A CAR**

"A Sunday Drive." Signed "Salvador Debon" and "J. Ruiz." Numbered "No. 836." Impressed "1510." With fitted base. Retired.

14 1/2 by 16 by 8 inches

\$1,800 – 2,200





381



382

**381  
PAIR OF LLADRO FIGURINES –  
SLEEPING BOY AND GIRL IN  
ROCKING CHAIR**

Boy sitting next to a toy pony, 1992, number 5846, girl holding a doll, 1987, number 5448, both J. Puche, retired. (2nd pair in sale)

Height, 4 <sup>3</sup>/<sub>4</sub> inches

\$200 – 400

**382  
LLADRO FIGURAL GROUP –  
GIRL KISSING BOY**

Both seated on a bench, F. Polope, 1995, number 7635, retired.

Height, 7 <sup>1</sup>/<sub>2</sub> inches

\$200 – 300

**383  
LLADRO FIGURAL GROUP  
FEATURING MICHAEL JACKSON**

World international theme, J. Huerta, 1993, limited edition, number 32 on base, inscribed, no impressed Lladro number. Housed in a glass case.

Height, 17 inches

\$2,000 – 3,000







384, detail



384

**384  
LLADRO FIGURINE  
OF ABRAHAM LINCOLN**

Memorial replica with children at front and an American flag behind, limited-edition number 333/2500, J. Puche, 1995, Lladro number 7554, retired.

Height, 21 ¼ inches

\$600 – 800



385

**385  
PINE BLANKET CHEST**

With lift-top lid over two pullout drawers with Chippendale style brasses and strap hinges on shaped bracket feet. *Distressed condition.*

25 ½ by 44 by 20 ½ inches

\$200 – 400



386, partial

**386  
SET OF EIGHT CROSSBACK  
DINING CHAIRS**

Comprised of four armchairs and four side chairs, with turned legs and loose cushions.

Largest, 36 ½ by 20 by 16 inches

\$400 – 600





387



387



387



388

### 387 GROUP OF MISCELLANEOUS COPPER ITEMS

Including a samovar table lamp with bone handles, copper kitchen molds, and a jardiniere with ceramic blue and white handles.

Lamp, 30 ½ by 17 ½ by 13 ½ inches

\$200 – 400

### 388 ENTERPRISE MANUFACTURING COMPANY COFFEE MILL

With brass eagle finial.

34 ½ by 20 by 19 ½ inches

\$800 – 1,200





389

**389**  
**NEEDLEPOINT PICTURE**  
**OF AN EAGLE**

Surrounded by a floral bouquet.

33 by 26 ½ inches including frame

\$300 – 500





390

**390**  
**ANTIQUE TRESTLE TABLE**

In country style, with one pullout drawer, missing the other. Old repairs to top.

27 by 47 by 16 inches

\$800 – 1,200





391

**391**  
**HINGED BLANKET CHEST**  
 With iron hardware, on shaped feet.  
 20 ½ by 44 ½ by 14 ½ inches  
 \$400 – 600



392

**392**  
**SET OF SIX PEWTER GRADUATED MEASURES**  
 The quart is marked "Yates & Birch."  
 Varying dents and wear.  
 Tallest height, 6 inches  
 \$300 – 500





393

**393  
QUEEN ANNE STYLE HIGHBOY**

With molded top, batwing brasses, shaped apron, and cabriole legs.

67 ½ by 40 by 20 inches

\$400 – 600



394

**394  
PROVINCIAL STYLE DROP-LEAF  
BREAKFAST TABLE**

With block turned legs on ball feet.

28 ½ by 65 ¼ by 25 ¼ inches

\$400 – 600



395

**395  
WALT HORTON  
(AMERICAN, 20TH CENTURY)**

"Tomboy Days," numbered 2/100, depicting bronze girl dressed as a boy with fishing pole, on rotating wood base.

Height, 20 ½ inches

\$400 – 600



396

**396  
WOODEN VICTORIAN  
STYLE WASHSTAND**

With pullout drawer, two towel racks,  
and an undertier.

33 by 25 by 16 inches

\$100 – 200



397

**397  
MARK HOPKINS  
(AMERICAN, 20TH CENTURY)**

"Imagine," signed, dated '89, numbered  
29/30. Bronze statue of a lying boy  
contemplating with a pen and paper.

9 ¾ by 22 by 9 inches

\$800 – 1,200



398

**398  
PROVINCIAL STYLE  
CORNER CABINET**

With two glazed panel upper doors and  
two lower cabinet doors.

80 by 47 ½ by 22 inches

\$200 – 400





399



401



400

**399**

**NICHOLS & STONE  
HITCHCOCK ARMCHAIR**

Painted black with parcel gilding, featuring a motto and shield on the crest: "Ne Tentes Aut Perfece." With stretchers and spindle back.

33 by 23 by 23 inches

\$200 – 300

**400**

**KOHLER LONDON  
MAELZEL METRONOME**

With mahogany case. *Chipped top.*

13 by 5 3/4 by 5 3/4 inches

\$100 – 200

**401**

**TWO LALIQUE RABBITS**

Satin finish, etch signed on base.

Tallest, 2 1/2 by 3 by 2 inches

\$100 – 200



402

**402**  
**JACOBEOAN STYLE CABINET**

With two pullout drawers over two cabinet doors.

31 by 55 by 17 ¾ inches

\$600 – 800

**403**  
**PROVINCIAL STYLE**  
**CORNER CHAIR**

With ladder back slats, woven rush seat, and bulbous stretchers.

31 by 29 by 22 inches

\$100 – 200



403





404

**404  
SET OF SIX GRADUATED  
PEWTER MEASURES**

Each hallmarked and marked in English with the measuring standard: litre, demi-litre, decilitre, demi-decilire, double centilitre, centilitre.

Size varies

\$200 – 400



405

**405  
QUEEN ANNE STYLE LOWBOY**

With parquetry veneer, cabriole legs with shell knees, and brass drops. 20th century.

28 by 30 by 17 inches

\$600 – 800



406

**406  
18TH CENTURY STYLE DESK**

With brass pulls, cabriole legs, and an extending writing panel.

30 by 59 by 27 inches

\$600 – 800



407

**407**

**VICTORIAN BISCUIT BARREL**

With metal shield-shaped cartouche, banding, and swing handle.

Height, 10 inches; diameter, 5 inches

\$300 – 500



408

**408**

**PAIR OF BRASS LAMPS**

With molded decoration atop a tripod base with scrolling legs terminating in claw feet.

36 by 17 inches

\$150 – 200



409

**409**

**QUEEN ANNE STYLE SIDE TABLE**

With shaped apron, two pullout drawers, and cabriole legs on pad feet.

\$200 – 300





410



411

**410  
PENNSYLVANIA DUTCH STYLE  
WOODEN CRADLE**

With pierced heart decoration.

9 ½ by 33 ½ by 14 ¼ inches

\$100 – 200

**411  
JACOBEAN STYLE SIDE TABLE**

With one pullout drawer, turned legs and H stretcher, rosettes, and carved decoration.

28 by 43 by 25 ½ inches

\$300 – 500



412

**412  
DANIE DE JAGER  
(SOUTH AFRICAN,  
20TH CENTURY)**

Bronze figural group of two children of different races hugging. On rotating marble base. Signed and dated 1996.

22 by 10 inches

\$400 – 600



413

**413  
GILT-METAL AND WOOD PLAQUE  
OF THREE CHILDREN**

With the children covered by floral vines,  
bordered by two columns of wood inset  
with two small plaques in Latin. Stamped  
"Del Nero / New York / Germantown."

19 by 33 by 4 1/2 inches

\$150 – 200





414

**414  
VICTORIAN STYLE  
PEDESTAL TABLE**

With ornate carving and tripod base.

30 by 20 inches

\$200 – 400



415

**415  
STATUE OF A  
SEATED GIRL SEWING**

Bronze with colored patination.

Height, 30 inches

\$200 – 400



416

**416**  
**SERPENTINE CARVED**  
**CHEST OF DRAWERS**

With four pullout drawers, brass pulls,  
and ogee bracket feet.

35 by 49 by 36 inches

\$200 – 400





417



418

**417**  
**PROVINCIAL STYLE END TABLE**  
 With scalloped edges and tapered legs.  
 29 by 33 by 17 inches  
 \$100 – 200

**418**  
**SET OF BRASS**  
**FIREPLACE ACCESSORIES**  
 Comprised of a pair of andirons and  
 a poker, shovel, brush, and stand in a  
 reticulated brass holder.  
 Height of andirons, 23 ½ inches  
 \$200 – 400



419

**419**  
**SET OF BRASS FIRE TOOLS**  
 Including a poker, tongs, shovel, and  
 brush in a stand.  
 31 by 8 by 8 inches  
 \$100 – 200



420

**420  
REFECTORY STYLE TABLE**

With plank top and turned legs joined by an H stretcher.

30 by 65 ¼ by 25 inches

\$300 – 500



421

**421  
PAIR OF GEORGIAN  
STYLE ANDIRONS**

With brass ball finials and baluster shaped standards.

23 by 11 ½ by 6 ½ inches

\$200 – 300



422

**422  
LANE CEDAR CHEST**

Aroma-tite construction, with upholstered lift-top lid, false drawer fronts, and locking mechanism.

18 ½ by 43 ½ by 17 inches

\$100 – 150





423



424

**423  
COLONIAL STYLE  
CHEST OF DRAWERS**

With parquetry veneering and iron pulls.

36 by 44 ¾ by 23 inches

\$300 – 500

**424  
CERAMIC WHIELDON LAMB**

Circa 1790.

5 ½ by 6 by 2 ¾ inches

PROVENANCE Richard Yeakel Antiques,  
Laguna Beach, Calif.

\$200 – 300



425



426



427

**425  
PAIR OF GILT-METAL  
CANDLESTICKS**

With incised floral decoration.

Height, 11 inches; diameter, 5 inches

\$40 – 60

**426  
DROP-LEAF TABLE**

On Marlborough legs, with circular top and two pullout drawers with brass escutcheons and pulls.

27 by 31 by 39 inches

\$300 – 500

**427  
LADDER BACK ARMCHAIR**

With graduated slats, woven rush seat, and turned stretchers.

45 by 26 by 16 inches

\$100 – 200





**428**  
**RAMON PARMENTER**  
**(AMERICAN, B. 1954)**

"Summer Rain," signed, dated 1996, numbered 20/36. Bronze girl with colored patination, holding a doll, walking with an umbrella. *Missing glass umbrella "fabric."*

Height, approximately 40 inches

\$2,000 – 4,000



**429**  
**EARTHENWARE HURRICANE LAMP**  
Kerosene lamp with ribbon handle, decorated with abstract painting. Signed.

14 by 4 inches

\$50 – 75

**430**  
**PAIR OF COPPER JUG-FORM HANDLED LAMPS**  
With stepped wood base. Electrified.

29 by 16 inches

\$100 – 150



431, partial



432

**431  
GROUP OF NINE ASSORTED  
PEWTER PIECES**

Consisting of three pitchers, three tankards, serving dish with cover, mustard pot, and salt shaker with cover.

Tallest, 12 inches

\$40 – 60

**432  
CERAMIC GRAVY BOAT**

Decorated with a scene of pagodas beside a river.

3 ½ by 4 by 9 inches

\$30 – 50





433



433



433



433



433



434

#### 433 ASSEMBLED GROUP OF BLUE AND WHITE CERAMIC TABLE ARTICLES

Comprised of a scenic serving bowl from the Paanaker Estate, small octagonal bowl, two lidded double-handled bowls (one lid lacking), lidded handled serving bowl, Fallow Deer Wedgwood plate, and Italian incense burner.

Sizes vary

\$200 – 300

#### 434 GROUP OF THREE QUEEN ELIZABETH GOLDEN JUBILEE COMMEMORATIVE PLATES

Each in original box. Marked Royal Collection China. Dated 2002.

Diameter, 10 1/4 inches

\$100 – 200





435, partial

**435**  
**SET OF TEN CHINESE COBALT**  
**RIMMED SOUPS**

With parcel gilding and hand-painted floral reserves.

Diameter, 9 inches

\$400 – 600

**436**  
**SET OF ROGERS FLATWARE**

Comprised of sixteen dinner forks, fifteen salad forks, fourteen knives, sixteen soup spoons, fifteen teaspoons, one serving fork, and one gravy ladle.

Sizes vary

\$200 – 300



436, partial



436, detail





437, partial



437, detail

**437**  
**STERLING AND PARCEL-GILT**  
**GORHAM FLATWARE SERVICE**

Comprised of eleven dinner knives, eleven dinner forks, eleven salad forks, eleven spoons, twelve soup spoons, twenty-three teaspoons, twelve iced tea spoons, twelve cocktail forks, twelve demitasse spoons, eleven steak knives, twelve butter knives, one master butter knife, two berry spoons, one pie server, one carving set, one ladle, one rounded serving spoon with tines, one serving spoon, and one serving fork.

Sizes vary

\$2,000 – 4,000



438, partial

**438**  
**STERLING AND PARCEL-GILT**  
**TOWLE FLATWARE SERVICE**

In Supreme pattern, comprised of sixteen knives, seventeen forks, fifteen salad forks, seventeen soup spoons, fifteen teaspoons, five serving spoons, one slotted serving spoon, and one pie server.

Sizes vary

\$1,500 – 2,500

**439**  
**FIVE CHRISTOFLE**  
**ASPARAGUS SERVERS**

Five silver-plated asparagus-form servers stamped "Christofle France" and with Ritz Paris hotel seal. In two fitted Ritz Paris boxes.

Length of each, 4 ¾ inches

\$100 – 150



439





440, partial



441

**440**  
**RAYNAUD LIMOGES PARTIAL**  
**DINNER SERVICE**

With cobalt and gilded rims, comprised of seven 9 1/2" dinner plates, eight 7 3/4" salad plates, seven 6 1/2" bread and butter plates, seven 6 1/4" saucers, and seven cups.

\$300 – 500

**441**  
**VERSACE PORCELAIN COVERED**  
**VEGETABLE DISH**

Russian Dream by Rosenthal, with polychrome enamel and gilded decoration. Marked on base.

7 by 13 by 6 1/2 inches

\$100 – 200



442, partial

**442**  
**GROUP OF SEVEN**  
**DOUBLE-HANDLED**  
**PORCELAIN SERVING DISHES**

Each with central painted figural medallions, five with parcel gilding and two similar with silver gilding. No maker's marks.

Approximately 9 by 6 inches

\$400 – 600

**443**  
**SET OF TWENTY**  
**GILT-METAL CHARGERS**

With shell form decoration.

Diameter, 12 ½ inches

\$300 – 500



443, partial





444, partial



445

**444  
SET OF ELEVEN CHINESE EXPORT  
ARMORIAL BLUE AND WHITE  
RIM SOUPS**

Each with decorated borders, three floral sprays on the rims, and two armorial emblems surmounted by a crown in the bowl.

Diameter, 8  $\frac{3}{4}$  inches

\$400 – 600

**445  
ROCOCO STYLE SILVER  
TABLE PLATEAU**

With mirrored top and hinged wooden bottom.

Height, 5 inches; diameter, 18 inches

\$100 – 200



446

**446  
RISLER AND CARRE STERLING  
COFFEE SERVICE**

In a ridged pattern with rosewood handles and acorn finials, each piece marked with a Minerva head. Comprised of an 18" water urn, 11" coffee pot, 11" chocolate pot, 9 1/2" teapot, and 8" lidded waste bowl.

Sizes vary

\$600 – 800

**447  
SET OF SIXTEEN SILVER CHARGERS**

With feather-pattern rim. Marked "David Orgell."

Approximately 12 1/2 inches

\$400 – 600



447, partial





448, partial



449

**448  
SEVRES STYLE GILDED  
DESSERT SERVICE**

Comprised of twelve 8" dessert plates, twelve cup and saucer sets, one 18" serving tray, one creamer, and one teapot. Blue underglaze crossed swords mark. 20th century.

\$300 – 500

**449  
SET OF FOUR BRASS CHARGERS**

With ridged rims.

Diameter, 12 inches

\$50 – 100



450, partial

**450  
SET OF TWENTY-FOUR  
WATER GOBLETS**

With red bowls and clear stems.

\$100 – 200

**451  
PARTIAL SET OF  
GORHAM STEMWARE**

Cut crystal with gilded rims, comprised of five 7 3/4" water glasses and ten 7" wine glasses.

\$100 – 200

**452  
PARTIAL SET OF  
GILDED STEMWARE**

In wave-pattern glass with gilded rims, comprised of four 7 1/4" wine glasses, five 7" wine glasses, and four 8 1/2" champagne flutes.

\$100 – 200

**453  
SET OF TWENTY-TWO  
WATER GOBLETS**

In a blue bubbled pattern. 7" stems.

\$100 – 200



451, partial



452, partial



453, partial





454, partial



455, partial

#### 454

##### **ADAMS LANCASTER IRONSTONE DINNER SERVICE**

Comprised of ten 10 1/4" dinner plates, thirteen 8 1/4" salad plates, nineteen 6" bread and butter plates, twenty 7 3/4" cereal bowls, three 6" soup bowls, seven 5 3/4" saucers, one covered footed tureen with ladle and underplate, two 10" serving bowls, one gravy boat with underplate, and one teapot.

\$200 – 300

#### 455

##### **LENOX DINNER SERVICE**

In Regency Black pattern, comprised of eighteen 10 3/4" dinner plates, twenty-six 8" salad plates (1 chipped), twenty-six 6 1/4" bread and butter plates, fourteen cups, twenty-six 6" saucers.

\$300 – 500



456

**456**  
**PAIR OF 19TH CENTURY**  
**SAUCE TUREENS**

Painted with floral bouquets and gilding.  
 Marked "Copeland and Garrett."  
 Numbered "6407." With covers.

6 <sup>3</sup>/<sub>4</sub> by 8 by 6 inches

\$300 – 500

**457**  
**SET OF NINE BEER GLASSES**

Clear with gilded rims.

8 <sup>3</sup>/<sub>4</sub> inches

\$100 – 200

**458**  
**SET OF GILDED STEMWARE**

In hand-blown ridged pattern with  
 double-banded gilding. Sizes vary.

\$300 – 500



457, partial



458, partial





459

**459**

**BOB BYERLEY**

**(AMERICAN, B. 1941)**

"Little Red Hen," enhanced giclée on canvas, signed lower right and inscribed to Michael Jackson on verso, numbered A.P. 15/50, dated 1994. Image depicting a mother and daughter conversing before bedtime.

27 1/2 by 33 1/2 inches including frame

\$200 – 300



460

**460  
TWO TRAVELING ASIAN  
PORCELAIN TEA SETS**

Each with a double wicker handled teapot, featuring hand-painted scenic cartouches and two matching cups. In fitted wicker baskets with metal hardware fittings.

Baskets, 7 ½ by 11 by 9 inches

\$100 – 200

**461  
STERLING TEAPOT WITH  
ENAMEL FLOWERS**

In octagonal shape with floral finial.

Height, 6 ½ inches

\$100 – 200



461





462, partial



463

**462  
ROYAL DOULTON DINNER  
SERVICE FOR TWELVE**

In Stanwyck pattern, comprised of eleven 10<sup>3</sup>/<sub>4</sub>" dinner plates, twelve 8" salad plates, twelve 6<sup>1</sup>/<sub>2</sub>" bread and butter plates, twelve 6<sup>1</sup>/<sub>4</sub>" saucers, eleven cups, two sugar bowls (lids missing), one creamer, two 10<sup>3</sup>/<sub>4</sub>" vegetable bowls, and two 14" oval platters.

\$300 – 500

**463  
GROUP OF CHILDREN'S  
STERLING FLATWARE**

Made by Lunt, comprised of three forks, three knives, and two spoons.

\$100 – 200



464, partial

**464**

**BERNARDAUD DINNER SERVICE**

With cobalt and gilded rims, comprised of fifteen 10 ½" dinner plates, sixteen 8 ½" salad plates, fifteen 6 ½" bread and butter plates, sixteen 5 ½" saucers, and fourteen cups.

\$1,000 – 2,000





465

**465**  
**GILDED TABLE CENTERPIECE**

With etched decoration, a central tureen, four covered oval dishes, two pepper shakers, and two cobalt glass lined salt cellars. In a fitted round base with four wooden handles.

Diameter, approximately 36 inches

\$800 – 1,200



466

**466  
STATUE OF MUSKETEER**

In gilt metal on a marble-footed base.

10 by 3 1/4 by 3 1/4 inches

\$100 – 150



467

**467  
SET OF SIX ORREFORS  
CANDLESTICKS**

Three graduated pairs, each signed on base.

Heights: 11 inches, 7 3/4 inches,  
5 1/2 inches

\$200 – 400



468

**468  
SET OF THREE PLATES**

Reading "Crown Prince," "King," and  
"Princess." Stamped "R.W. China."

Diameter, 8 inches

\$80 – 120





469



**469**  
**BRONZE STATUE**  
**OF CRYING CHILD**

Holding a staff in one hand, with a snake wrapped around the other. Signed indistinctly on base.

30 ½ by 36 inches

\$300 – 500

**470**  
**FOUR PEWTER PLATES**

With scalloped edges and two with partially faded stamps.

Diameter, 9 ¼ inches

\$80 – 120

**471**  
**SET OF TEN PEWTER DEEP PLATES**

With coat of arms embossed on the rim and scalloped edges. Stamped "Chamberlain" on the reverse.

Diameter, 9 ¾ inches

\$500 – 700

**472**  
**FIVE PEWTER DISHES**

Three plates attributed to B. Barns with stamp. One plate attributed to William Danforth with stamp. One plate attributed to Edward Danforth with stamp.

Diameter, 7 ¾ inches

\$400 – 600



470, partial



471, partial



472, partial





473



474



475

**473  
CHILD'S SPINDLE BACK CHAIR**

With turned legs and stretcher.

24 by 15 by 12 inches

\$100 – 200

**474  
CHILD'S WOODEN CHAIR**

With sinuous back rail and incised carving.

24 <sup>7</sup>/<sub>8</sub> by 15 <sup>3</sup>/<sub>8</sub> by 15 <sup>1</sup>/<sub>4</sub> inches

\$100 – 200

**475  
VICTORIAN STYLE  
CHILD'S RECAMIER**

With carved walnut swan and damask upholstery.

15 by 34 inches

\$200 – 300



476

**476**  
**THREE CHILD'S**  
**WINDSOR ARMCHAIRS**

One a sack back Windsor armchair with turned legs, one a rust-painted rod back Windsor armchair, the third a fancy painted side chair with gilded stenciling on the crest.

Largest, 25 by 15 inches

\$200 – 300

**477**  
**CHIPPENDALE STYLE**  
**CHILD'S WING CHAIR**

With floral upholstery and ball and claw feet.

37 by 14 inches

\$100 – 200



477





478, detail



478

**478**  
**SCULPTURE OF OLD MAN WITH**  
**WINE JUG**

Signed on back "Galleria A Frilli Firenze."

Height, approximately 24 inches

\$200 – 300



479

**479**  
**DOULTON LAMBETH**  
**MAJOLICA SHERRY BARREL**

Polychrome blue, light blue, and gold glazed finish. Marked on base. *Missing top stopper.*

Height, 11 inches; diameter, 9 inches

\$200 – 400

**480**  
**KENNEDY CANED**  
**ROCKING CHAIR**

Larry Arata's exact copy of John F. Kennedy's upholstered cane rocking chair. Brass plate attached on back reads, "Exact copy of authentic custom upholstered President John F. Kennedy's rocker crafted for him by Lawrence J. Arata, White House staff, and duplicated for Michael Jackson-1993 with thanks from Big Brothers of greater Los Angeles." Black leather upholstery over caning.

42 by 29 by 32 inches

\$600 – 800



480





481



482



483

**481  
MANTEL CLOCK**

With a brass dial, marked "Unghaus."

12 by 33 by 7 inches

\$100 – 200

**482  
COUNTRY FRENCH STYLE  
OCCASIONAL TABLE**

With pullout drawer, shaped apron, and cabriole legs.

26 by 24 ½ by 16 ½ inches

\$100 – 200

**483  
PAIR OF GEORGIAN  
STYLE ANDIRONS**

With paw feet.

23 ½ by 12 by 7 ½ inches

\$200 – 300



484

**484**  
**PAIR OF PROVINCIAL**  
**ROCOCO STYLE ARMCHAIRS**

With down-filled upholstery, including attached and loose cushions.

38 ½ by 30 by 29 inches

\$200 – 400



485

**485**  
**PAIR OF DRESDEN STYLE**  
**TABLE LAMPS**

Each with three cherubs and floral decoration around a painted blue standard. Underglaze blue crossed swords mark.

Height without shade, 20 inches

\$100 – 200





486

**486  
BRONZE STATUE OF  
BOY IN A LOINCLOTH**

With an upraised foot and a crab on the base, signed "Da Lotto."

40 by 29 inches

\$300 – 500



487

**487  
PAIR OF NESTING  
OCCASIONAL TABLES**

In William and Mary style with baluster and block turned legs and stretchers.

Largest, 23 ¼ by 24 ½ by 20 inches

\$100 – 200



488

**488  
BRASS BIRD SCULPTURE**

On a rock form base.

Height, 8 inches

\$100 – 200



489, detail



489

**489**

**AFTER ANTONIN MERCIÉ  
(FRENCH, 1812–1877)**

"Gloria Victis," parcel-gilt and bronze  
statue mounted on a black marble socle,  
signed "A. Mercié" on base.

99 by 58 inches

\$2,000 – 3,000





490

**490**  
**JIM DAVIDSON**  
**(AMERICAN, 20TH CENTURY)**  
 Patinated bronze ballerina lacing her shoe, on green marble base.  
 44 ½ by 31 ½ inches  
 \$300 – 500



491

**491**  
**CUPBOARD CABINET**  
 With raised panel doors over twelve pullout drawers, on shaped bracket feet.  
 64 by 46 by 16 ¾ inches  
 \$600 – 800



492

**492**  
**PROVINCIAL STYLE**  
**CANTERBURY TABLE**  
 In rectangular form. *Staining to tabletop.*  
 27 ¼ by 29 ¼ by 17 ½ inches  
 \$100 – 200



493



494



495

**493  
CHIPPENDALE STYLE  
COFFEE TABLE**

With carved knees and ball and claw feet.

18 ¼ by 53 ½ by 22 inches

\$100 – 200

**494  
VICTORIAN ENAMEL  
AND CAST-IRON STOVE**

With raised decoration and pierced foliate grills.

26 ¼ by 19 by 15 inches

\$400 – 600

**495  
BRONZE STATUE OF A  
PEASANT BOY**

Holding a vineyard trellis.

Height, 48 inches

\$200 – 300





496



497



498

**496  
GOLD PAINTED COMPOSITION  
WALL CLOCK**

With dial flanked by Hermes and Poseidon.

12 by 17 by 5 inches

\$60 – 80

**497  
CARVED FIGURAL HALL TABLE**

With four cherub supports carved in the round and a green marble top with black and white speckles.

Diameter, approximately 48 inches

\$400 – 600

**498  
BRONZE STATUE OF A CHILD**

Holding a branch in one hand. Colored patination.

29 by 11 ½ inches

\$200 – 300



499

**499**  
**BLAIR MUHLESTEIN**  
**(AMERICAN, 20TH CENTURY)**

"Out of the Best Books," colored patinated bronze figure of a boy perched in a tree. Signed and numbered "11/50."

28 by 12 by 17 inches

\$200 – 300



500

**500**  
**CHILD'S SACK BACK**  
**WINDSOR ARMCHAIR**

With baluster turned legs and stretcher.

35 by 17 ¼ inches

\$200 – 300



501

**501**  
**GENTLEMAN'S SHOE HORN**

With wood shaft and imitation tortoise-shell horn.

Length, 23 ¼ inches

\$20 – 30





502

**502**  
**SCULPTURAL CANDELABRA**

Polychrome bronze featuring an angel holding a nine-light candelabra above a reclining man. *Candelabra is loose.*

94 by 30 by 37 inches

\$600 – 800



503

**503  
TWO METAL KNIGHTS  
ON HORSEBACK**

With upraised lances and attached pennons. Labeled "Made in Italy."

9 by 4 by 9 inches

\$30 – 50

**504  
COMPOSITION SINGLE  
LIGHT TORCHIERE**

In the form of a kneeling angel. On an octagonal base.

21 ½ by 11 inches

\$60 – 80



504



505

**505  
SEVRES STYLE PORCELAIN JAR**

With floral decoration and gilded handle. With spurious Sevres mark.

8 ½ by 4 inches

\$80 – 120





506



507

**506  
WOODEN SWIVEL  
PIANO STOOL BY TONK**

On base with four metal claw and ball crystal feet. *Old bracket repair to seat.*

19 by 15 inches

\$200 – 300

**507  
BARTA ARTUR BUDAPEST CARVED  
WOODEN MANTEL CLOCK**

Featuring a maiden on an empire style couch pointing to a clock with an enamel dial and black Roman numerals.

24 by 20 ½ by 8 ½ inches

\$300 – 500

**508  
RAMON PARMENTER  
(AMERICAN, B. 1954)**

"Dream Flight," bronze boy with plane and dog on stone base.

37 by 24 by 21 inches

\$3,000 – 5,000



508





**509**  
**HOWARD JASON**  
**(AMERICAN, 20TH CENTURY)**  
 "Puppy Love," signed and dated '97,  
 numbered 27/50 on back of pant leg.  
 Polychrome bronze sculpture.

Diameter, 46 by 15 inches  
 \$2,000 – 3,000

**510**  
**PAUL BEDARD**  
**(AMERICAN, 20TH CENTURY)**  
 "Neverland Valley," oil on canvas,  
 illustration style image of a country boy  
 and a pan flute-playing faun. Signed  
 lower right and dated '86.

50 1/4 by 42 1/4 inches  
 \$200 – 300



510





511

**511**  
**AFTER JULES-FELIX COUTAN**  
**(FRENCH, 1848–1939)**  
 “Cupid,” bronze with colored patination.  
 27 ½ by 10 inches  
 \$200 – 300



512



512

**512**  
**TWO LARGE AMETHYST GEODES**  
 With deep purple color seen in the well-  
 formed crystals.  
 Largest, 25 by 12 by 5 inches  
 \$600 – 800



513



514



515

**513  
CARVED HANGING  
HALL COAT RACK**

In Victorian style with multiple hooks.  
*One hook broken.*

18 by 70 1/2 by 4 1/2 inches

\$200 – 300

**514  
VICTORIAN STYLE PATINAED  
METAL HALL TREE**

With four ornate hooks, lion-paw divider,  
and two removable trays.

72 by 36 by 14 inches

\$600 – 800

**515  
POLYCHROME METAL  
FIGURAL SCULPTURE**

Featuring a nymph in a chariot with putti,  
garlands, and swans on conforming floral  
and foliate base.

29 by 19 by 14 inches

\$300 – 500





516

**516  
MONUMENTAL CARVED AND  
INLAID HANGING SWING**

Featuring scenic wild animal panels,  
marquetry and elaborate peacock and  
foliate carving.

Approximately 94 by 101 by 48 inches

\$1,200 – 1,800



517

**517  
ROCOCO STYLE  
METAL-LIDDED URN**

With putti and horse decoration.

Height, 21 inches

\$200 – 300



518

**518  
SCENIC INLAID CHAIR**

Featuring flamingos and peacocks on the back rails and decorative ivory inlay on the stiles.

This lot will only be shipped domestically.

42 by 20 by 20 inches

\$100 – 200







519, detail

**519**  
**MONUMENTAL GILDED THRONE**

With trumpeting putti, cupid heads, horses, lions, sea creatures, and scrolling foliage, with red velvet upholstery.

85 by 44 by 38 inches  
 (not including flanking decorations)

\$1,500 – 2,500





520

**520  
ELABORATELY CARVED AND  
INLAID OBLONG DINING TABLE**

Featuring carved elephants and inlaid scenic vignettes, fitted with a protective plate-glass top.

31 ½ by 100 by 50 inches

\$1,000 – 2,000





520, detail





521, partial



522

**521  
SET OF SEVEN MARQUETRY  
INLAID SIDE CHAIRS**

With flowering urn inlay on crest and  
geometric floral pattern roundels on  
apron and sides.

\$200 – 300

**522  
AFTER AUGUSTE MOREAU  
(FRENCH, 1834–1917)**

"Whispering Children," bronze with  
colored patination.

17 by 11 inches

\$100 – 200





523, detail

**523**  
**OCTAGONAL INLAID**  
**DINING TABLE**

With floral and figural scenic inlay,  
featuring elephants on an octagonal  
pedestal base with a protective plate-  
glass top.

Diameter, 31 ½ by 71 inches

\$1,000 – 2,000



523





524, partial



525



526

**524  
SET OF EIGHT SCENIC INLAID  
DINING ROOM CHAIRS**

Each featuring a spindle back, surmounted by a panel on the crest with elephants and a tree with floral and foliate inlay throughout.

40 by 18 ½ by 18 inches

\$600 – 800

**525  
FRAMED ENGRAVED PRINT**

Depicting exotic animals and pyramids.

15 ¾ by 18 ½ inches including frame

\$100 – 200

**526  
GLASS TOP DINING TABLE**

With two freestanding brass ram heads as a base.

30 by 80 by 48 inches

\$200 – 400





527

**527**  
**A FULL-LENGTH PORTRAIT**  
**OF A WOMAN**

Posing with a basket of flowers. Oil on  
canvas, modern, unsigned.

85 by 61 inches

\$400 – 600





528

**528**  
**MARK HOPKINS**  
**(AMERICAN, 20TH CENTURY)**

Bronze statue of children playing in a tree house, signed on base and numbered 58/2500.

Height, 16 inches

\$400 – 600



529

**529**  
**MARK HOPKINS**  
**(AMERICAN, 20TH CENTURY)**

"Last One In," bronze sculpture of four children swimming, signed on base and numbered 695/2500.

Height, 13 ½ inches

\$400 – 600

**530**  
**MAITLAND-SMITH CABINET**  
**ON STAND**

In the form of a house.

73 by 33 ½ by 21 ½ inches

\$600 – 800



530





531



533



532

**531  
TABLE VANITY CHEVAL MIRROR**

With scalloped and gilded sight edge.  
*Damage to mirror plate.*

23 by 14 ½ by 8 ⅞ inches

\$200 – 300

**532  
BRASS COAL BIN AND SHOVEL**

With elaborate embossed design.

18 by 11 ¼ by 16 ½ inches

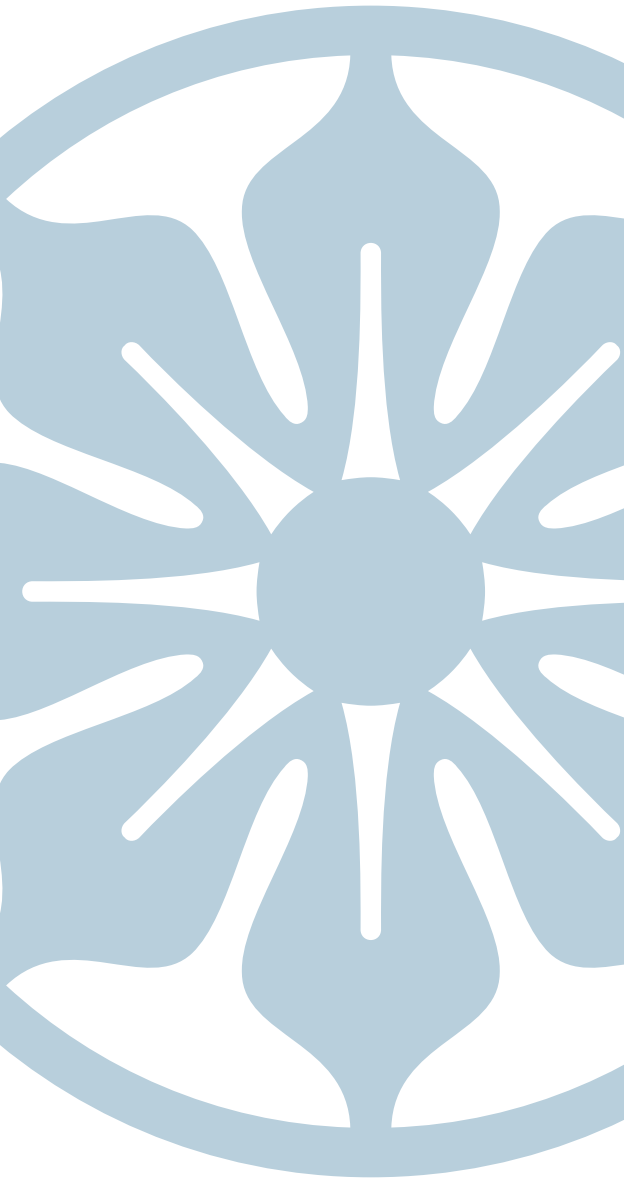
\$200 – 300

**533  
PARCEL-GILT BRONZE STATUE  
OF A YOUNG GIRL**

On a marble base.

Height, 10 inches

\$100 – 200



**534**

**MODERN BRONZE STATUE  
OF CUPID AND PSYCHE**

Signed on base "Pencil Debut." Dark  
brown patination.

81 by 33 by 30 inches

\$400 – 600



534





535



536

**535**

**THREE-PANEL MIRROR**

Featuring a print of a rose bouquet between two mirrored end panels.

Frame, 53 ½ by 32 inches; print, 20 ½ by 16 inches; mirrors, 23 by 9 ½ inches

\$100 – 200

**536**

**AFTER ISIDORE BONHEUR  
(FRENCH, 1827–1901)**

Bronze equestrian statue on marble stand. Signed on base.

30 by 26 by 9 ½ inches

\$400 – 600

**537**

**KAMRAN KHARAVANI  
(20TH CENTURY)**

Floral landscape, depicting red and pink flowers against a blue and green background, oil on canvas, signed and dated '03 at lower right.

39 by 27 inches including frame

\$400 – 600





537





538

**538  
POLYCHROME PAINTED SHIELD-  
SHAPED WOODEN CLOCK**

Surmounted by a crown. Battery  
operated.

44 by 36 inches

\$200 – 300



539

**539  
GOEBEL FIGURAL GROUP  
OF THREE CHILDREN**

"Follow the Leader," signed "MJ  
Hummel." Stamped "Goebel." Impressed  
"1964."

8 by 6 by 2 ½ inches

\$100 – 200



540

**540  
GOEBEL FIGURAL GROUP  
OF THREE GIRLS**

"School Girls," signed "MJ Hummel."  
Stamped "Goebel."

7 by 6 by 4 inches

\$100 – 200



541

**541**

**RAMON PARMENTER (AMERICAN, B. 1954)**

"Gift," signed, dated 1998, numbered 10/50. Bronze girl with colored patination, walking with glass ball and upraised hand holding a flower. *Missing flower.*

37 ½ by 14 by 18 ½ inches

\$1,500 – 2,500



542

**542**

**RAMON PARMENTER  
(AMERICAN, B. 1954)**

"Mischief," signed, dated '94, and numbered 3/38. Bronze boy with colored patination holding a fishbowl, with a cat on his shoulder.

51 by 18 by 21 inches

\$2,000 – 4,000





543

**543**  
**BOB BYERLEY**  
**(AMERICAN, B. 1941)**

"Evening Ride," print, signed lower right and numbered 343/1500, dated 1992. Image depicts a young boy riding an animated carousel horse spiraling upwards into the evening sky.

38 by 45 1/2 inches including frame

\$200 – 300



544

**544**

**BOB BYERLEY**  
(AMERICAN, B. 1941)

"Naming of the Flowers," print signed lower right and numbered 140/395. Image depicting a seated girl observing flowers and fairies.

25 by 21 inches including frame

\$100 – 200

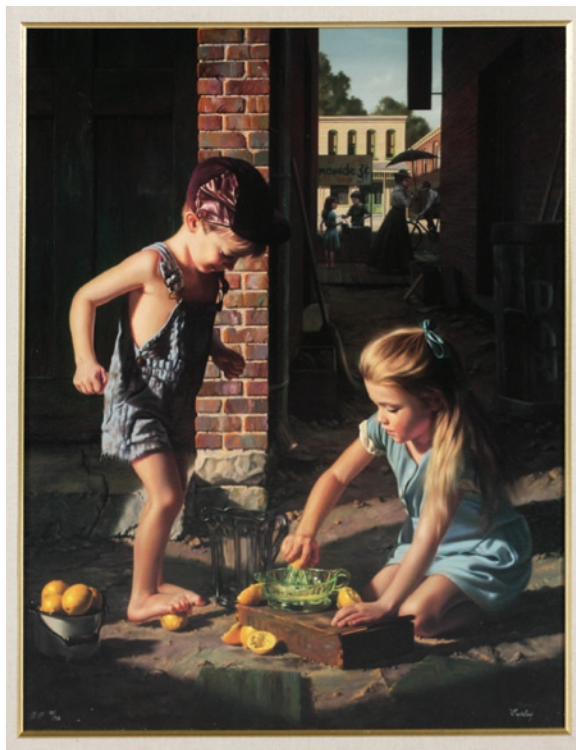
**545**

**BOB BYERLEY**  
(AMERICAN, B. 1941)

"Add Water and Stir," giclée signed lower right and numbered AP 15/50, inscribed to Michael Jackson on verso, and dated 1994. Image depicts two children making lemonade.

34 by 28 inches including frame

\$200 – 300



545





546

546

**SANDRA KUCK  
(AMERICAN, 20TH CENTURY)**

"Moon Beam" giclée on canvas, signed  
and numbered 44/495, with a certificate  
of authenticity.

32 by 25 ½ inches including frame

\$200 – 300





# Julien's AUCTIONS

Our sincerest thanks:

*the*  
**BEVERLY HILTON®**

*auction*  
NETWORK

9900 WILSHIRE  
BEVERLY HILLS



**NEWBRIDGE**  
*silverware*

COBALT  DESIGN



# Julien's AUCTIONS

## THE COLLECTION OF THE KING OF POP: MICHAEL JACKSON

Sale Dates: Wednesday, April 22 – Saturday, April 25, 2009  
9900 Wilshire Boulevard, adjacent to the Beverly Hilton, Beverly Hills, California

### BIDDER REGISTRATION FORM

Please check ONE of the following: \_\_\_\_\_ I will be attending the live auction.  
\_\_\_\_\_ I will be bidding online through Auction Network.  
\_\_\_\_\_ I will be placing absentee bids (not including online).  
\_\_\_\_\_ I will be phone bidding.

Please print legibly.

Name: \_\_\_\_\_ Company: \_\_\_\_\_

Tax ID number and related state (if applicable): \_\_\_\_\_

Email: \_\_\_\_\_

Address: \_\_\_\_\_

City: \_\_\_\_\_ State: \_\_\_\_\_ ZIP: \_\_\_\_\_

Day Phone: \_\_\_\_\_ Cell Phone: \_\_\_\_\_

Fax: \_\_\_\_\_ Check here if different billing address: \_\_\_\_\_

Type of Credit Card: \_\_\_\_\_ Account Number: \_\_\_\_\_

Expiration Date: \_\_\_\_\_ Security Code: \_\_\_\_\_

Billing address if different than above:

Name: \_\_\_\_\_

Address: \_\_\_\_\_

City: \_\_\_\_\_ State: \_\_\_\_\_ ZIP: \_\_\_\_\_

Absentee Bid(s) (mark if applicable): \_\_\_\_\_

Phone Bid(s) (mark if applicable): \_\_\_\_\_

Lot #: \_\_\_\_\_ Bid: \_\_\_\_\_

Lot #: \_\_\_\_\_ Bid: \_\_\_\_\_

Lot #: \_\_\_\_\_ Bid: \_\_\_\_\_

Lot #: \_\_\_\_\_ Bid: \_\_\_\_\_

Lot #: \_\_\_\_\_ Bid: \_\_\_\_\_

Lot #: \_\_\_\_\_ Bid: \_\_\_\_\_

Lot #: \_\_\_\_\_ Bid: \_\_\_\_\_

Lot #: \_\_\_\_\_ Bid: \_\_\_\_\_

Lot #: \_\_\_\_\_ Bid: \_\_\_\_\_

Lot #: \_\_\_\_\_ Bid: \_\_\_\_\_

Lot #: \_\_\_\_\_ Bid: \_\_\_\_\_

Lot #: \_\_\_\_\_ Bid: \_\_\_\_\_



# BIDDER REGISTRATION FORM continued

The Collection of the King of Pop: Michael Jackson

**Payments:** Julien's Auctions will invoice only for the property (including buyer's premium). Payments for winning lots should be made to Julien's Auctions, P.O. Box 691789, West Hollywood, California 90069. We accept wire transfer, cashiers check or personal check, MasterCard, Visa, American Express and Discover. California and New York residents will be charged sales tax.

**Shipping:** Buyer pays all shipping costs: Paid items may be picked up onsite at 9900 Wilshire Boulevard, Beverly Hills, California after the auction through Tuesday, April 28, 2009 at no additional costs. Charlie's Moving Company will be available to make local deliveries for a charge of \$95.00 per hour with a 2-hour minimum per job. There is no insurance available for local deliveries. The buyer agrees that Julien's Auctions will not be responsible for shipping and/or insurance of the property after the auction and they will deal directly with Box Brothers for shipping or Charlie at Charlie's Moving Company at 310-386-6046 for local deliveries in Los Angeles. After April 28, Box Brothers will manage all property to be picked up or shipped to the winning bidders. Please contact their representative Ray Nolasco at 800-369-0497, international calls 310-453-1532 or email: ray@boxbrothers.com. Box Brothers will assess a fee of \$45.00 for up to three lots and \$10.00 for each additional lot, for items picked up after April 28 and before May 15, 2009. After May 15, an \$8.00 per day fee PER LOT will be assessed by Box Brothers to cover storage and insurance for items not picked up or shipped prior to that date. Allow 2-12 weeks from receipt of payment for delivery of each lot dependent on destination and mode of shipment. Timescales and charges can be discussed with Box Brothers prior to the sale. Each lot to be shipped fully insured. Box Brothers will not claim a lower value on a lot to avoid customs on international shipments. The buyer is responsible for all fees including duties, taxes, VAT, customs and other charges for lots shipped.

**Acknowledgement:** I hereby request approval for this registration to bid in this auction sale with Julien's Auctions (the Auctioneer). I acknowledge that I have read, understood and agreed to the Terms and Conditions of the sale as posted on www.juliensauctions.com and printed in the auction catalogue, applicable to the auction sale for which I now register and request the Auctioneer to approve such registration as an authorized participant as a Floor Bidder (Bidder at live event), Absentee Bidder (Bidder by phone, mail, fax, or online) or Online Bidder. I acknowledge and agree that a **20% Buyer's Premium** will be added to the hammer price on individual lots \$50,000 and higher, and a **25% Buyer's Premium** on all individual lots of \$0 - \$49,000 for which I am the successful bidder. In addition, there will be an additional 3% buyer's premium charged for any lots won on www.auctionnetwork.com. I further acknowledge that I am responsible to pay Julien's Auctions the aggregate of the hammer price and the Buyer's Premium for such lot(s). All invoices must be paid within 10 calendar days after the close of the auction. I authorize Julien's Auctions to charge my credit card (3% commission will be added) listed on page 1 for all items purchased (including shipping) at this auction, and any future Julien's Auctions I may participate in, if not otherwise paid in full within 10 calendar days after the close of the auction. In addition, I understand that my credit card will be charged a fee of \$25.00 for my bidder registration in advance of the auction. By signing below I confirm that I have read and agree with all the facts stated in this Acknowledgement and verify all information on page one is correct.

Signature: \_\_\_\_\_ Date: \_\_\_\_\_

Print Name: \_\_\_\_\_

Company (if applicable): \_\_\_\_\_ Title: \_\_\_\_\_

**Representations, Warranties and Personal Guarantee:** I hereby represent and warrant that I am authorized by the above named Company, Person or Entity, as the case may be (the "Customer"), to place bids and to contract on behalf of the Customer for the purchase of the lots in this auction sale and to receive any such lots on behalf of the Customer. I hereby irrevocably and unconditionally personally guarantee and promise to pay Julien's Auctions on demand the full purchase amount and expressly waive protest, presentment, diligence, demand or notice of any kind. I understand that Julien's Auctions will rely upon these representations, warranties and guarantee in registering me to bid and/or extending me credit or other consideration in connection with this auction sale.

Signature: \_\_\_\_\_ Date: \_\_\_\_\_

Do not put title

Please fax completed forms to 310-827-2125.

Forms must be received by 12:00 p.m. (Noon) Pacific Standard Time  
on the day prior to the auction day in order to be guaranteed.

Julien's Auctions • P.O. Box 691789, West Hollywood, California 90069  
Phone 310-836-1818 • Fax 310-827-2125 • Email [info@juliensauctions.com](mailto:info@juliensauctions.com)

## Terms and Conditions of Sale

Julien's Auctions guarantees the authenticity of Attribution of property listed in the catalogue or online as stated in the Terms of Guarantee. Except for the Limited Warranty contained in the terms of guarantee all property is sold "As Is." We make no warranties, nor does the consignor, as to the merchantability or fitness for a particular purpose, the correctness of the catalogue or other description of the physical condition, size, quality, rarity, importance, medium, provenance, exhibitions, literature or historical relevance of any property. No oral or written statements made in the catalogue, online listing, advertisement, bill of sale, and announcement or elsewhere made by employees (including affiliated and related companies) shall be considered a warranty. We and the Consignor make no representations and warranties, express or implied, as to whether the purchaser acquires any copyrights, including but not limited to, any reproduction rights of any property. We and the Consignor are not responsible for errors and omissions in the catalogue, online listings or any other supplemental material.

It is the responsibility of prospective bidders of live auctions to inspect the property before bidding to determine its condition, size, and to determine if it has been repaired or restored.

**Acknowledgement:** I hereby request approval for this registration to bid in this auction sale with Julien's Auctions (the Auctioneer). I acknowledge that I have read, understood and agreed to the Terms and Conditions of the sale as posted on [www.juliensauctions.com](http://www.juliensauctions.com) and printed in the auction catalogue, applicable to the auction sale for which I now register and request the Auctioneer to approve such registration as an authorized participant as a Floor Bidder (Bidder at live event), Absentee Bidder (Bidder by phone, mail, fax, or online) or Online Bidder. I acknowledge and agree that a **20% Buyer's Premium** will be added to the hammer price on individual lots \$50,000 and higher, and a **25% Buyer's Premium** on all individual lots of \$0 – \$49,000 for which I am the successful bidder. In addition, there will be an additional 3% buyer's premium charged for any lots won on [www.auctionnetwork.com](http://www.auctionnetwork.com). I further acknowledge that I am responsible to pay Julien's Auctions the aggregate of the hammer price and the Buyer's Premium for such lot(s). All invoices must be paid within 10 calendar days after the close of the auction. I authorize Julien's Auctions to charge my credit card (3% commission will be added) listed on page 1 for all items purchased (including shipping) at this auction, and any future Julien's Auctions I may participate in, if not otherwise paid in full within 10 calendar days after the close of the auction. In addition, I understand that my credit card will be charged a fee of \$25.00 for my bidder registration in advance of the auction. By signing below I confirm that I have read and agree with all the facts stated in this Acknowledgement and verify all information on page one is correct.

**Payments:** Julien's Auctions will invoice only for the property (including buyer's premium). Payments for winning lots should be made to Julien's Auctions, P.O. Box 691789, West Hollywood, California 90069. We accept wire transfer, cashier's check or personal check, MasterCard, Visa, American Express and Discover. Please note that Julien's will assess a 3% commission for all credit card payments. California and New York residents will be charged sales tax.

**Shipping:** Buyer pays all shipping costs: Paid items may be picked up onsite at 9900 Wilshire Boulevard, Beverly Hills, California after the auction through Tuesday, April 28, 2009 at no additional costs. Charlie's Moving Company will be available to make local deliveries for a charge of \$95.00 per hour with a 2 hour minimum per job. There is no insurance available for local deliveries. The buyer agrees that Julien's Auctions will not be responsible for shipping and/or insurance of the property after the auction and they will deal directly with Box Brothers for shipping or Charlie at Charlie's Moving Company at 310-386-6046 for local deliveries in Los Angeles.

After April 28, Box Brothers will manage all property to be picked up or shipped to the winning bidders. Please contact their representative Ray Nolasco at 800-369-0497, international calls 310-453-1532 or email: [ray@boxbros.com](mailto:ray@boxbros.com). Box Brothers will assess a fee of \$45.00 for up to three lots and \$10.00 for each additional lot, for items picked up after April 28 and before May 15, 2009. After May 15, an \$8.00 per day fee PER LOT will be assessed by Box Brothers to

cover storage and insurance for items not picked up or shipped prior to that date. Allow 2–12 weeks from receipt of payment for delivery of each lot dependent on destination and mode of shipment. Timescales and charges can be discussed with Box Brothers prior to the sale. Each lot to be shipped fully insured. Box Brothers will not claim a lower value on a lot to avoid customs on international shipments. The buyer is responsible for all fees including duties, taxes, VAT, customs and other charges for lots shipped.

Bids will not be accepted from those persons under the age of eighteen (18) without written consent of said persons parent or legal guardian. Written consent must acknowledge the terms and conditions of sale. This written consent constitutes an agreement to be bound thereby on behalf of the bidder.

Bidder registration is required for all persons wishing to bid live and online for Julien's Auctions. Any person registering for the auction in person or online will complete a registration or bid sheet.

All items are offered subject to a reserve. The reserve is the confidential minimum price acceptable to the Consignor. During a live auction the auctioneer may open any lot by bidding on behalf of the Consignor and may bid up to the amount of the reserve, by placing successive or consecutive bids for a lot or bids in response to other bidders. Online sales may do the same by employing the use of a starting bid which will commence bidding at or below the reserve price agreed to by the Consignor.

Julien's reserves the right to withdraw any property before the sale and will have no liability for doing so.

We reserve the right to accept or decline any bid. Bids must be for an entire lot and each lot constitutes a separate sale. All bids are per lot unless otherwise announced at a live sale by the auctioneer. Live auction lots will be sold in their numbered sequence unless the Auctioneer directs otherwise. It is unlawful and illegal for Bidders to collude, pool, or agree with another Bidder to pay less than the fair value for lot(s). Bidders participating in both live and online auctions acknowledge that the law provides for substantial penalties in the form of treble damages and attorneys' fees and costs for those who violate these provisions. For live auctions the auctioneer will have final discretion in the event that any dispute should arise between bidders. The auctioneer will determine the successful bidder, cancel the sale, or re-offer and resell the lot or lots in dispute. Julien's will have final discretion to resolve any disputes arising after the sale and in online auctions. If any dispute arises our sale record is conclusive. Julien's will execute order or absentee bids, and accept telephone bids as a courtesy to clients who are unable to attend the live auctions. Therefore we take no responsibility for any errors or omissions in connection with this service.

Subject to fulfillment of all of the conditions set forth herein, on the fall of the auctioneer's hammer, title to the offered lot will pass to the highest bidder acknowledged by the auctioneer, and such bidder thereupon (a) assumes full risk and responsibility (including without limitation, liability for or damage to frames or glass covering prints, paintings, photos, or other works), and (b) will immediately pay the full purchase price or such part as we may require. In addition to other remedies available to us by law, we reserve the right to impose from the date of sale a late charge of 1½% per month of the total purchase price if payment is not made in accordance with the conditions set forth herein. All property must be removed from either our premises by the purchaser at his expense not later than 10 business days following its sale and if it is not so removed, (i) a handling charge of 1% of the total purchase price per month from the tenth day after the sale until its removal will be payable to us by the purchaser, with a minimum of 5% of the total purchase price for any property not so removed within 60 days after the sale, and (ii) we may send the purchased property to a public warehouse for the account, at the risk and expense of the purchaser.

If any applicable conditions herein are not complied with the purchaser will be in default and in addition to any and all other remedies available to us and the Consignor by law, including, without limitation, the right to hold the purchaser liable for the total purchase price, including all fees, charges and expenses more fully set forth herein, we, at our option, may (a) cancel the sale of that, or any other lots sold to the defaulting purchaser at the same or any other auction, retaining as liquidated damages all payments made by the purchaser,

or (b) resell the purchased property, whether at public auction or by private sale, or (c) effect any combination thereof. In any case, the purchaser will be liable for any deficiency, any and all costs, handling charges, late charges, expenses of both sales, our commissions on both sales at our regular rates, legal fees and expenses, collection fees and incidental damages. We may, in our sole discretion, apply any proceeds of sale then due or thereafter becoming due to the purchaser from us or any affiliated company, or any payment made by the purchaser to us or any affiliated company, where or not intended to reduce the purchaser's obligations with respect to the unpaid lot or lots, to the deficiency and any other amounts due to us or any affiliated companies. In addition, a defaulting purchaser will be deemed to have granted and assigned to us and our affiliated companies, a continuing security interest of first priority in any property or money of our owing to such purchaser in our possession or in the possession of any of our affiliated companies, and we may retain and apply such property or money as collateral security for the obligations due to us or to any affiliated company of ours. Payment will not be deemed to have been made in full until we have collected good funds. In the event the purchaser fails to pay any or all of the total purchase price for any lot and Julien's elects to pay the Consignor any portion of the sale proceeds, the purchaser acknowledges that Julien's shall have all of the rights of the Consignor to pursue the purchaser for any amounts paid to the consignor, whether at law, in equity, or under these Conditions of Sale.

Under no circumstance will Julien's incur liability to a purchaser in excess of the purchase price actually paid.

The terms and conditions of sale herein described shall be enforced in accordance with, and governed by the laws of the State of California. Bidder acknowledges and agrees that the courts of the state of California shall have exclusive jurisdiction over any dispute(s). Bidder (in person, by agent, order bid, telephone, internet or by other means) agrees that any dispute arising shall be litigated exclusively in the courts of the State of California. Further, venue shall be in the Superior Court of Los Angeles County, in the state of California.

## Terms of Guarantee

"Attribution" is defined by Julien's as the creator, period, culture, source of origin, as the case may be as set forth in the Bold Type Heading of a lot in a live auction catalogue or the lot Title of an online auction, as amended by any oral or written salesroom notices and announcements or online notices and announcements. We make no warranties to information not contained in an online lot heading or information not contained in the Bold Type Heading of any live auction catalogue subject to the exclusions listed below.

Julien's warrants the "Attribution," as defined above and subject to the exclusions listed below, of a lot for a period of five years from the date of sale and only to the original purchaser on record at the auction. If it is determined to our satisfaction that the "Attribution" is incorrect, the sale will be rescinded if the lot is returned to the Julien's Auctions warehouse facility in the same condition in which it was at the time of sale. In order to satisfy Julien's that the "Attribution" of a lot is indeed incorrect we reserve the right to require the purchaser to obtain, at the purchaser's expense, the opinion of two experts in the field, mutually acceptable to Julien's and the purchaser, before we agree to rescind the sale under the warranty. This warranty is not assignable and applies only to the original purchaser on record with Julien's. This warranty does not transfer to any subsequent owners of any purchased property (this includes without limitation, heirs, successors, beneficiaries or assigns).

Should a sale be rescinded and the purchase price paid (final successful bid price, plus the buyer's premium), it is specifically understood that this will be considered the sole remedy. It is exclusive and in lieu of any other remedy available as a matter of law, or in equity.

Exclusions will be made and this warranty does not apply to "Attribution" which on the date of sale was in accordance with the then generally accepted opinion of scholars and specialists, or the identification of periods or dates of execution which may be proven inaccurate by means of scientific processes not generally accepted for use until after publication of the catalogue or listing online, or which were unreasonably expensive or impractical to employ.











## Julien's AUCTIONS

P.O. Box 691789, West Hollywood, California 90069

Phone: 310-836-1818 • Fax: 310-827-2125

Email: [info@juliensauctions.com](mailto:info@juliensauctions.com)

Web: [www.juliensauctions.com](http://www.juliensauctions.com)

[www.juliensauctions.co.uk](http://www.juliensauctions.co.uk)

Above, Lot 516, Monumental Carved and Inlaid Hanging Swing